

# CSL Elite F1® Set



## Quick Guide

EN



“PS”, PlayStation, “PS4” and “△×○□” are registered trademarks of Sony Interactive Entertainment Inc. All rights reserved.  
All other trademarks are the property of their respective owners.



www.fanatec.com



| PAGE 1 |

## CONNECTIONS

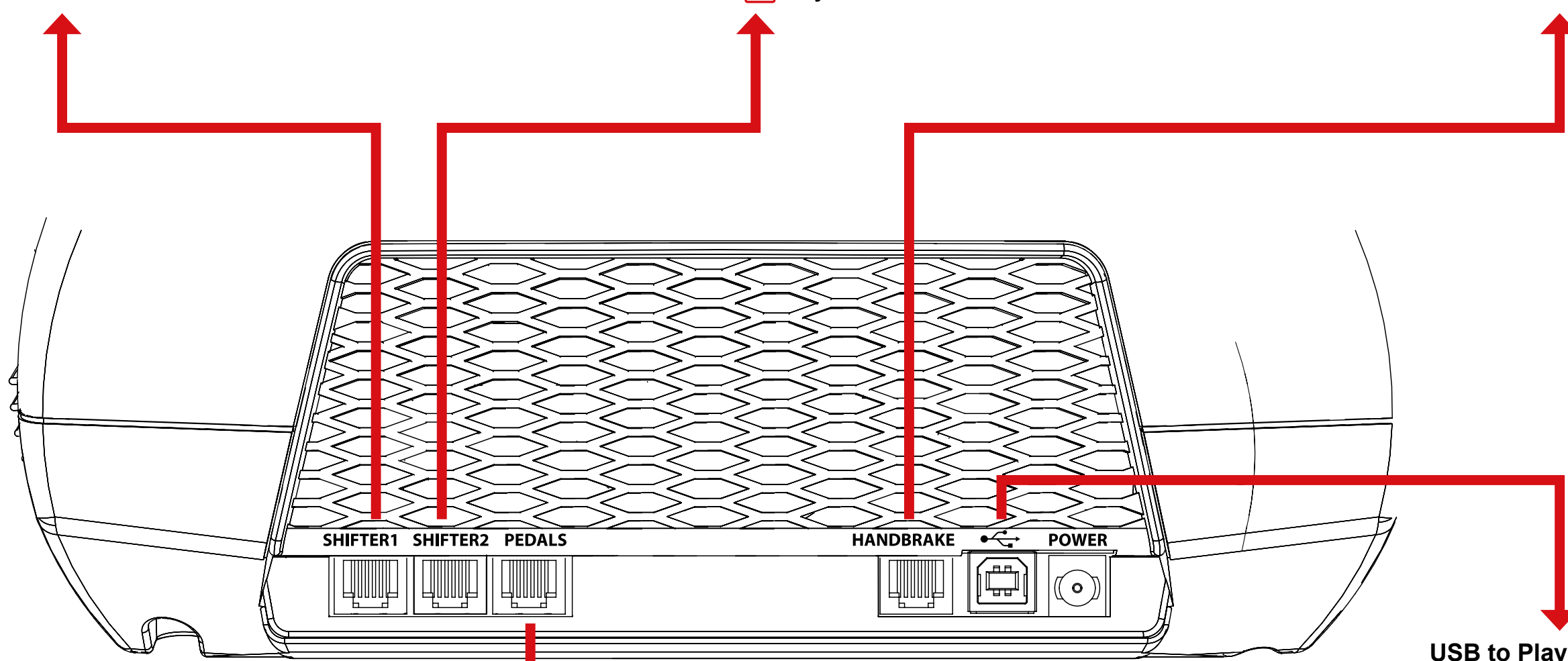
### H-PATTERN SHIFTERS

⚠ In H-pattern mode or SQ mode

### STATIC SHIFTER / SEQUENTIAL SHIFTER

⚠ Only in SQ mode

### HANDBRAKE



SHIFTER1 SHIFTER2 PEDALS

HANDBRAKE POWER

USB to PlayStation®4\*

PEDALS

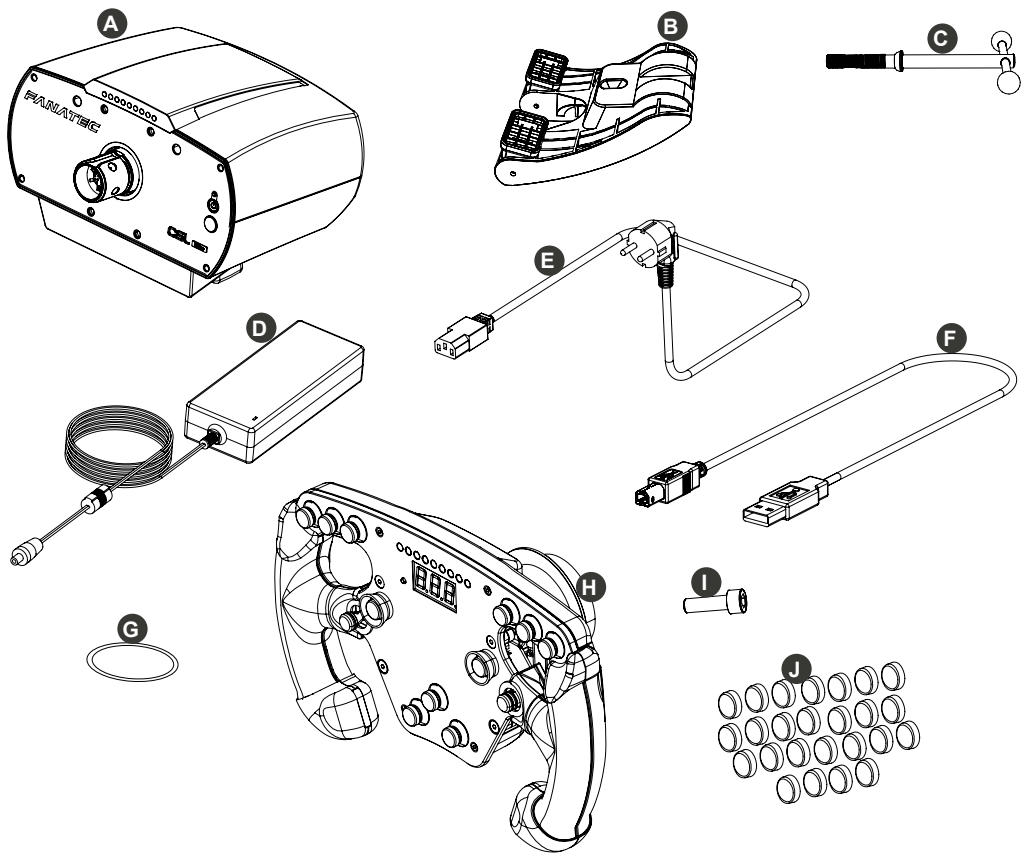
### IMPORTANT!

Use only the USB cable (F) with straight plug packaged with the CSL Elite Racing Wheel to avoid damage to the USB port.  
\* also to PC.  
PC compatibility not tested nor endorsed by Sony Interactive Entertainment Europe.

| PAGE 2 |

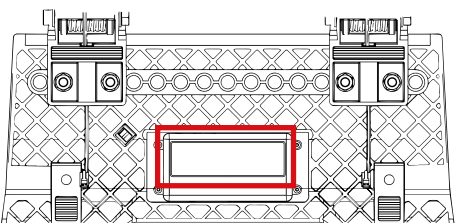
| PAGE 3 |

## CONTENTS

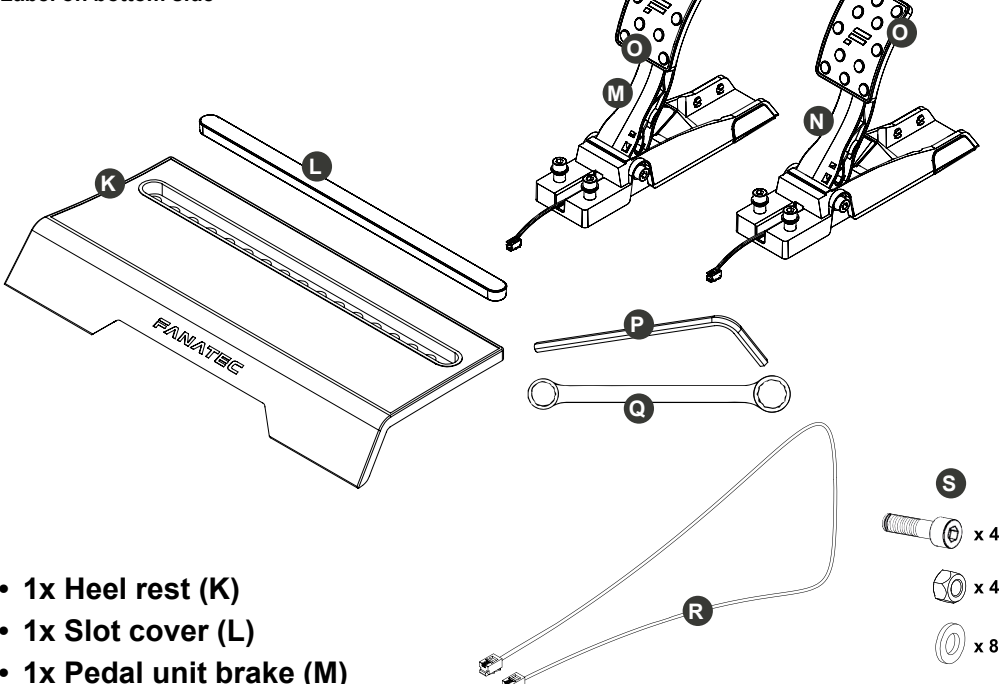


- CSL Elite Wheel Base (PS4™ version) (A)
- Table clamp (B)
- Table clamp screw with handle (C)
- Power supply unit (D)
- Power cord (regional) (E)
- USB connection cable (F)
- O-Ring (G)
- F1® steering wheel (H)
- Fixing screw (I)
- Racing style button caps (J)

| PAGE 4 |



Label on bottom side

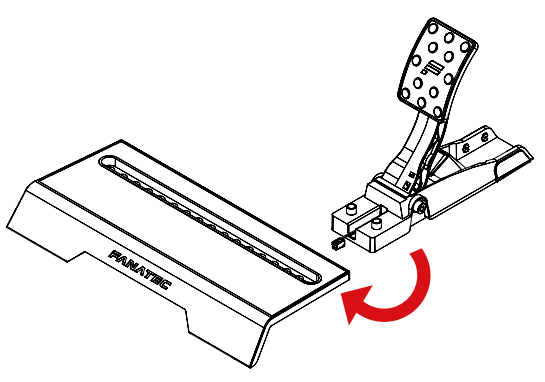


- 1x Heel rest (K)
- 1x Slot cover (L)
- 1x Pedal unit brake (M)
- 1x Pedal unit gas (N)
- 2x Rubber pedal covers (O)
- 1x Allen Key 6 mm (P)
- 1x Cropped wrench 13 mm (Q)
- 1x RJ12 cable (R)
- Mounting screws, nuts and washers (S)

| PAGE 5 |

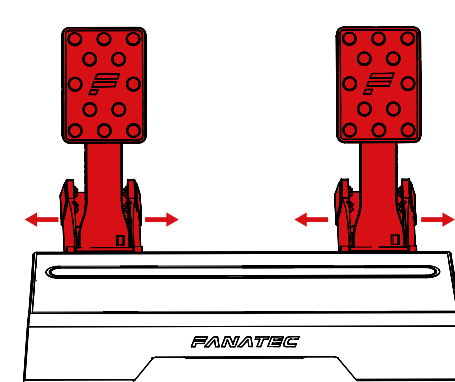
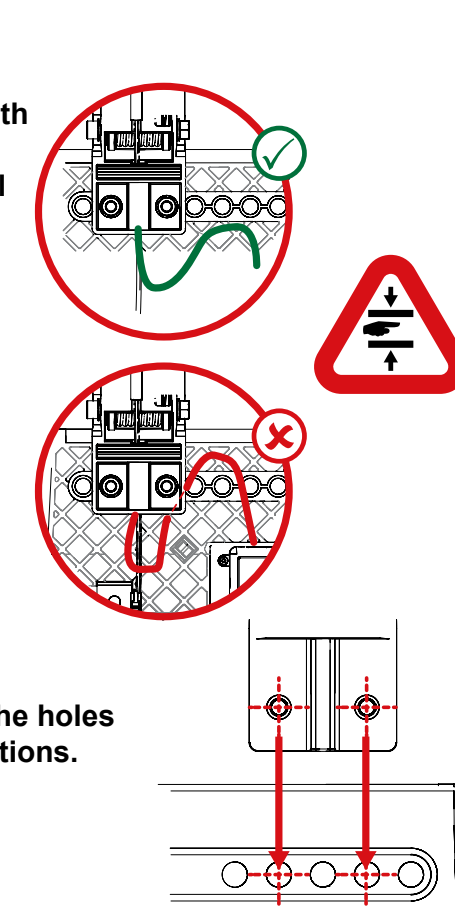
## PEDALS ASSEMBLY

Put together pedal units (M) and (N) with heel rest (K).  
Avoid clamping the cables of the pedal units!



Align the poles of the pedal unit with the holes of the heel rest to find the correct positions.

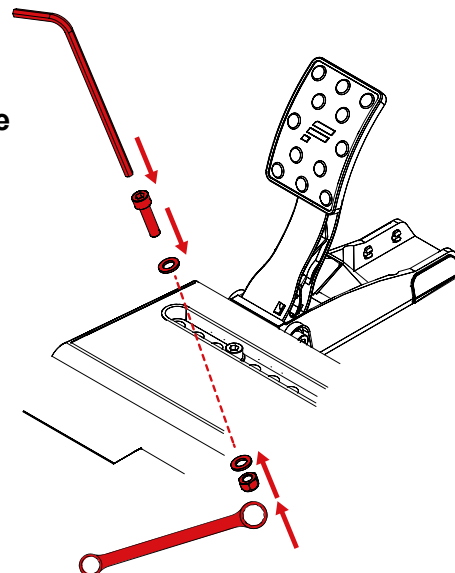
Try different positions for the pedal units (M) and (N) to find your favorite adjustment.



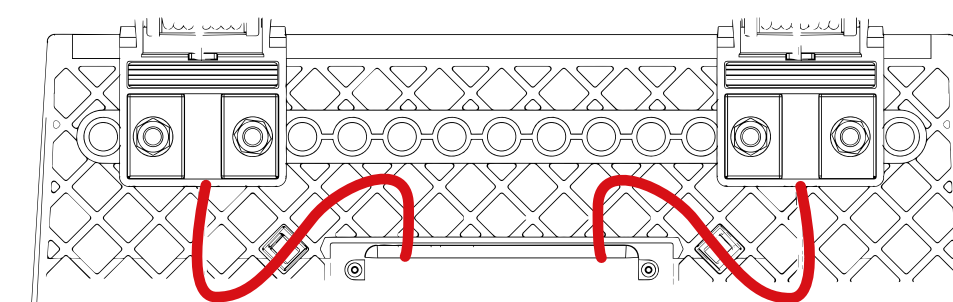
| PAGE 6 |

Insert the M8 screws with washer (S) from top side through the heel rest (K) and pedal unit (M)/(N), counter with washer and nut (S) from bottom side.

Tighten the assembly by using the Allen Key (P) and the wrench (Q) from package content. When done insert the slot cover (L) into the heel rest (K).



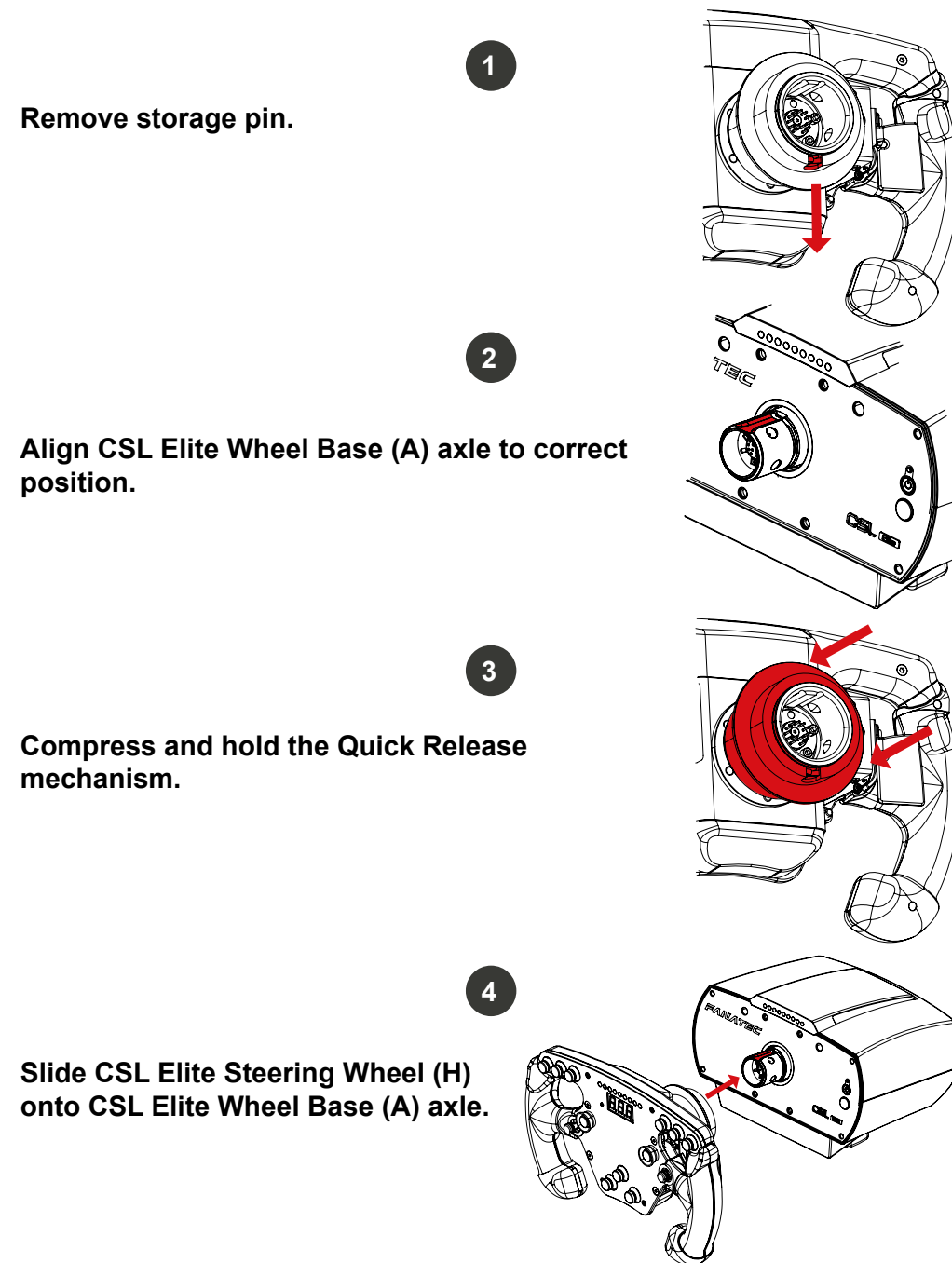
Connect the RJ12 plugs of the pedal unit cables to the corresponding port.



| PAGE 7 |

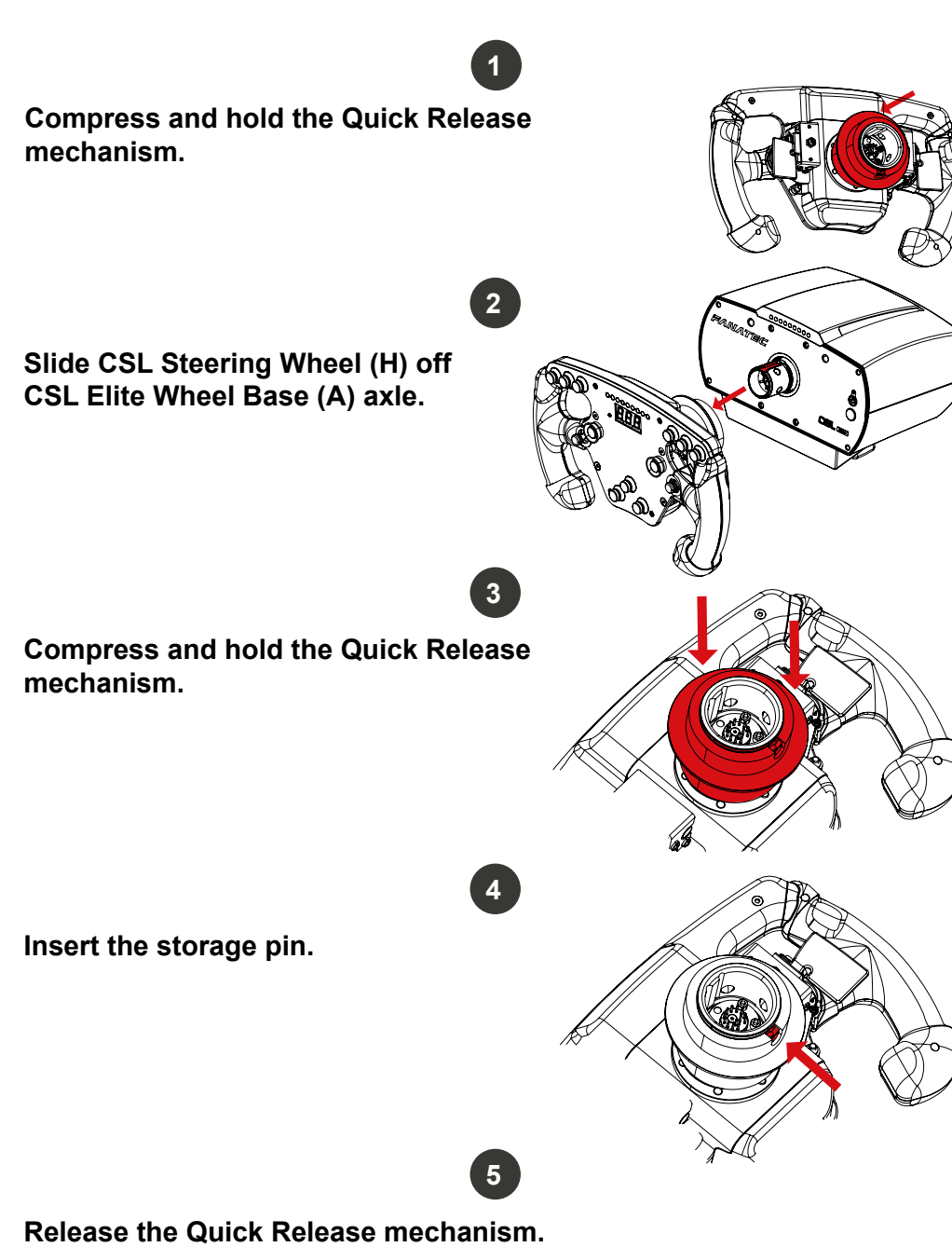


## ATTACHING THE RIM



| PAGE 8 |

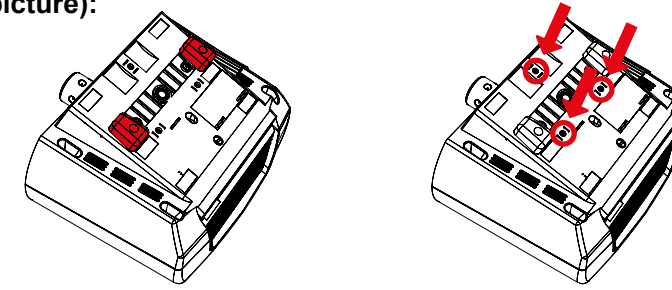
## DETACHING THE RIM



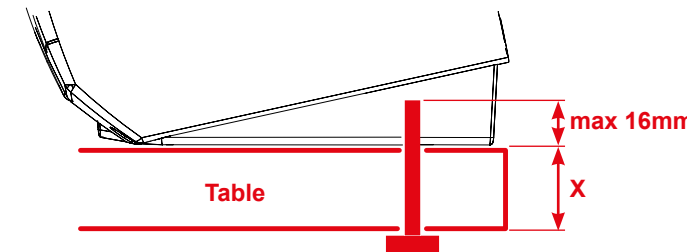
| PAGE 9 |

## HARD-MOUNTING

To hard-mount the wheel base, first disassemble the two blocks from the underside (lower left picture) using a 3 mm Allen key (not included). The CSL Elite Wheel Base + offers a three-point hard-mount location on the underside (lower right picture):



**IMPORTANT:** Use only good quality M6 bolts. Choose the correct bolt length to prevent the thread from reaching more than 16 mm into the wheel base. **Example: If your table is 20 mm thick, the bolts must not exceed a total thread length of 36 mm!** Always use all three hard-mount points as this allows for a proper and stable installation and avoids damage!



**NOTE:** To hard-mount the CSL Elite Wheel Base + to a table or rig with bolts please, find the printable drilling template in the download area of our website: [www.fanatec.com](http://www.fanatec.com)

## ATTENTION

When starting up the racing wheel for the first time please update the firmware, you can obtain it from [www.fanatec.com/downloads](http://www.fanatec.com/downloads). Follow the instructions provided by user manual.

**NOTE:** To update the firmware of this product, a PC\* is mandatory.  
\* PC compatibility not tested nor endorsed by Sony Interactive Entertainment Europe.

Compatibility with PlayStation®4 games on a case by case basis. For a full list of compatible games, please visit [www.fanatec.com](http://www.fanatec.com).

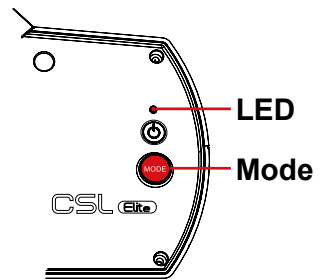
| PAGE 10 |

## MODES

The wheel base will start in PlayStation®4 Mode by default when the F1® steering wheel (H) is attached to the CSL Elite Wheel Base (A). To switch to other modes press the 'Mode' button once. The LED above the "○" button will indicate the current operation mode:

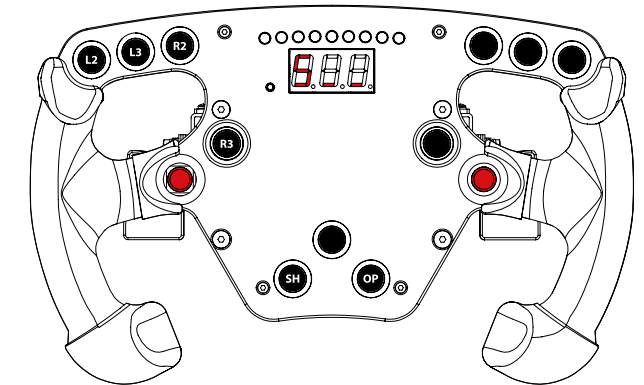
- Blue indicates PlayStation®4 mode
- Red indicates PC\* mode
- Purple indicates ClubSport Wheel Base V2 Compatibility Mode

\* PC compatibility not tested nor endorsed by Sony Interactive Entertainment Europe.



## CENTER CALIBRATION

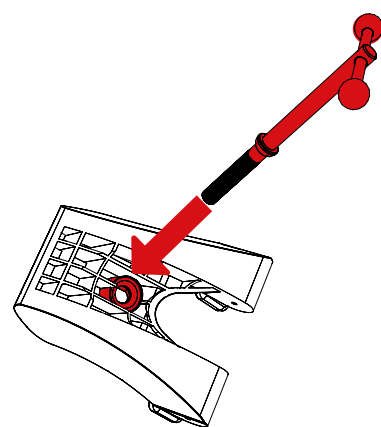
If a center calibration is needed (e. g. after firmware update of wheel base) you need to enter the tuning button as shown on the graphic by pressing the small black button next to the display → "S\_..." will appear on the display. Now turn the wheel to its center position and press both sticks as highlighted on picture below at the same time to calibrate the wheel center.



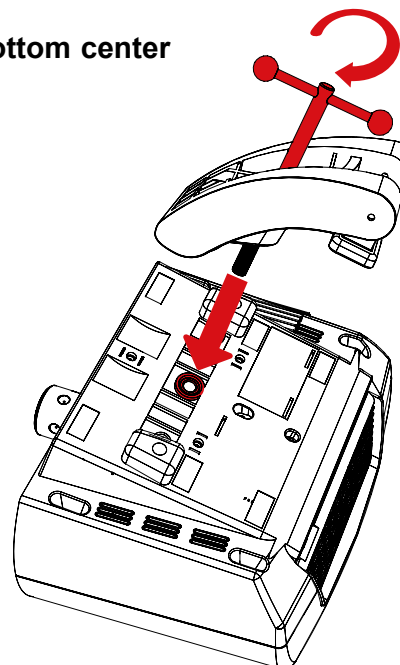
| PAGE 11 |

## TABLE CLAMP

1. Insert the table clamp screw with handles (C) into the table clamp (B).



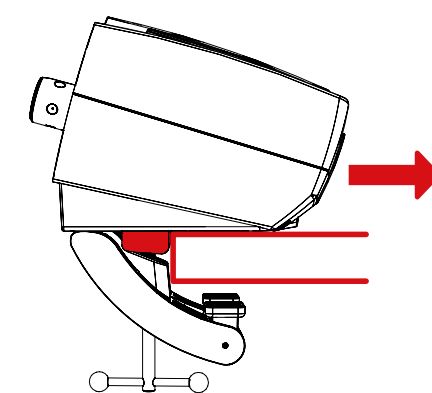
2. Turn the table clamp screw (C) into the bottom center of the CSL Elite Wheel Base (A).



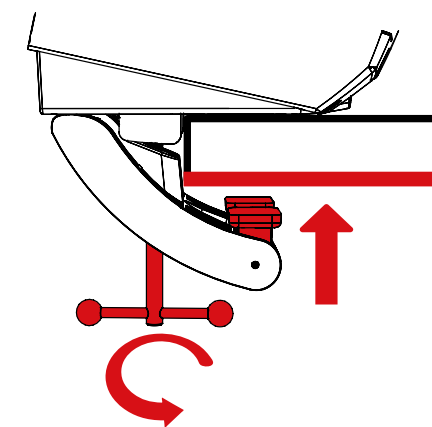
| PAGE 12 |

3. Slide the CSL Elite Wheel Base (A) onto the table top until the limiter blocks stop sliding at the edge of the table.

**NOTE:** Table clamp (B) has to be below table top.



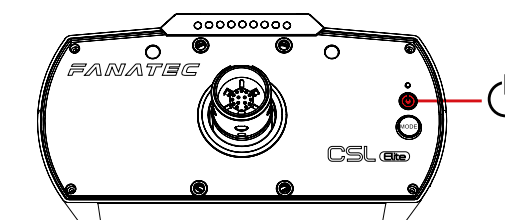
4. Tighten the table clamp (B) by turning the table clamp screw (C). Ensure that the table clamp's feet remain well aligned with the bottom of the table plate.



| PAGE 13 |

## ON AND OFF

To turn on the racing wheel, connect it to power and press the "○" button on the right side of the CSL Elite Racing Wheel for about one second. To turn off the racing wheel, press and hold the "○" button for 5 seconds.

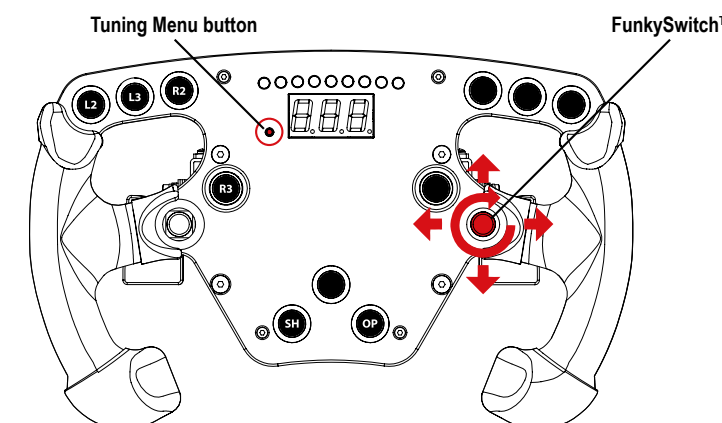


**NOTE:** Only use the power supply (D) and power cord (E) included with this product.

## TUNING OPTIONS

To enter tuning menu press the small black button next to the display. To navigate inside the menu, use the FunkySwitch™:

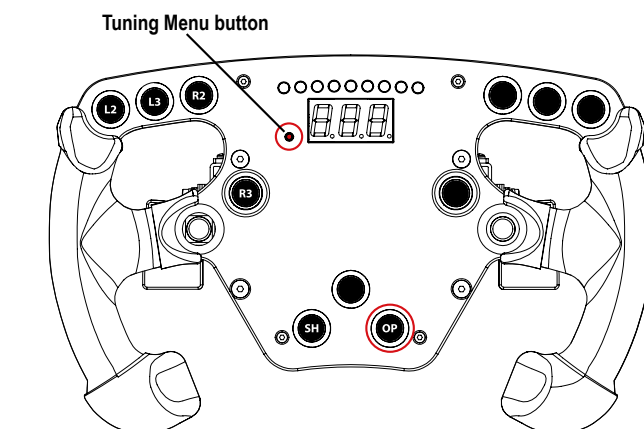
- Press directional stick up or down to access 5 setups
- Press directional stick right or left to go through the options and press or turn it clockwise or counter-clockwise to change option values



| PAGE 14 |

## SHIFTER CALIBRATION

To enter shifter calibration mode, simultaneously press the tuning menu button + "OP", highlighted below. For the detailed process read shifter manual.



## MANUAL

For detailed information please download the user manual from [www.fanatec.com/support](http://www.fanatec.com/support). This is just a QuickGuide and you will miss a lot of features if you don't read the user manual. This product is under warranty of Endor AG.

Manufactured by  
**ENDOR®**  
Fanatec® is a registered trademark of Endor AG  
Designed and developed by Endor AG in Germany  
E.ON-Allee 3 - 84036 Landshut - Germany  
Telephone: +49 (871) 9221-122 Fax: +49 (871) 9221-221  
Email: [info.webshop@fanatec.com](mailto:info.webshop@fanatec.com)  
Website: [www.fanatec.com](http://www.fanatec.com) - [www.endor.ag](http://www.endor.ag)  
Licensed for sale in Europe and Australia and for use exclusively with PlayStation®4.

The F1 FORMULA 1 logo, F1 logo, F1 FORMULA 1, FIA FORMULA ONE WORLD CHAMPIONSHIP, GRAND PRIX and related marks are trade marks of Formula One Licensing BV, a Formula 1 company. All rights reserved.

| PAGE 15 |