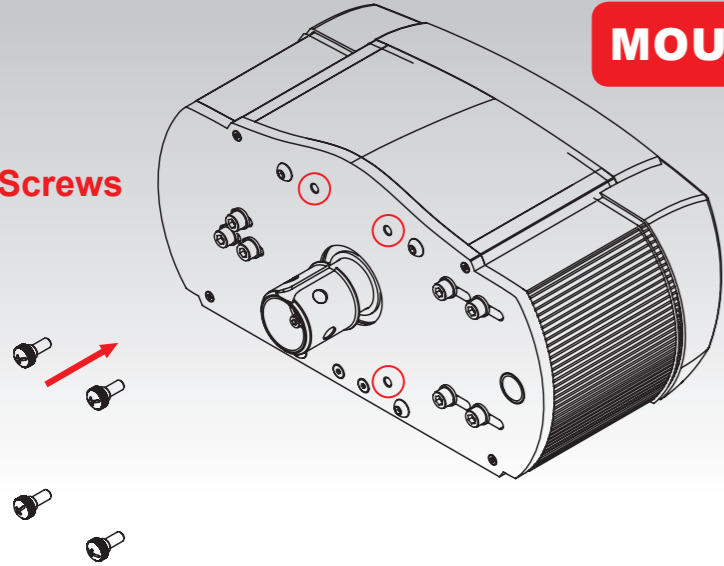
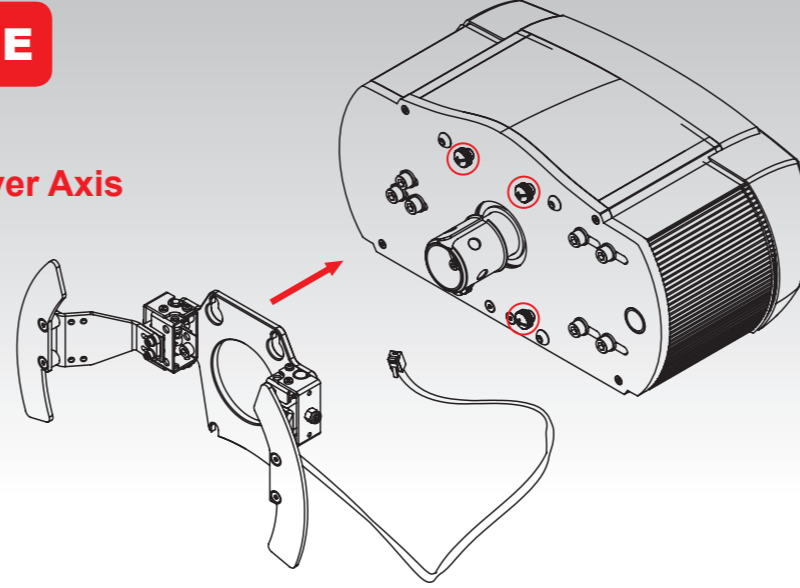


**MOUNTING TO WHEEL BASE**

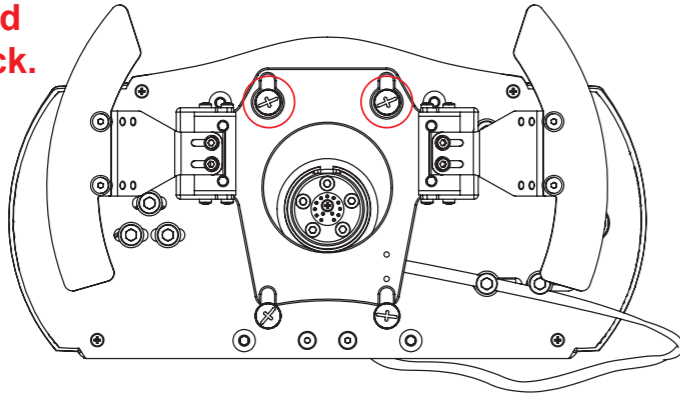
**1 Place Screws**



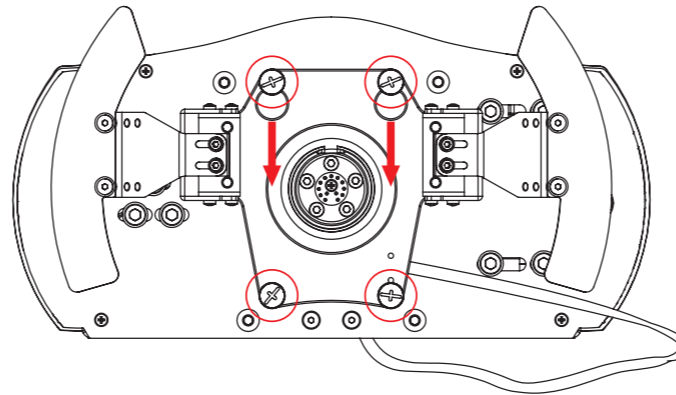
**2 Set Unit Over Axis**



**3 Tilt the unit onto the top screws, then push in and pull down to lock.**



**4 Tighten Screws**



**ClubSport**  
Static Shifter Paddles

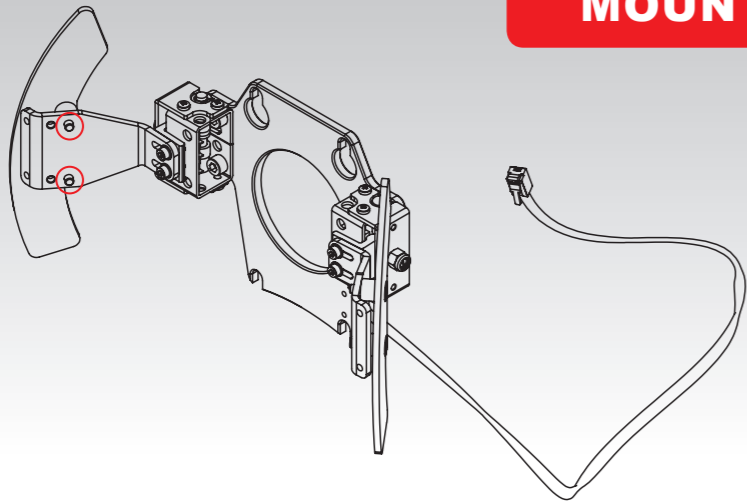


**QuickGuide**

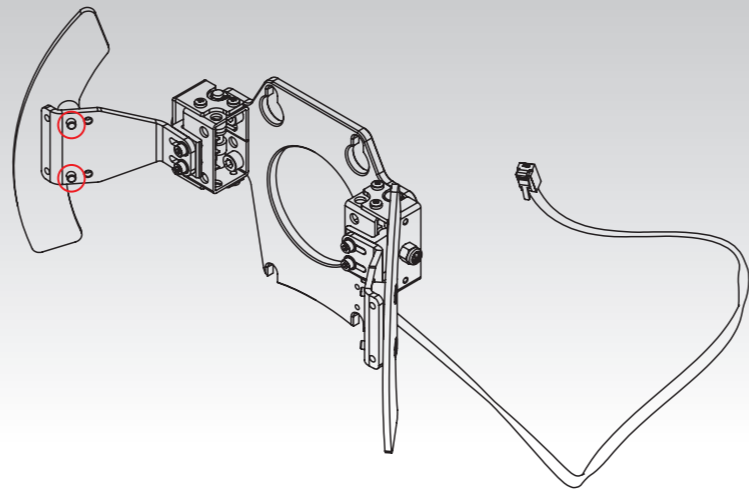


## MOUNTING OPTIONS

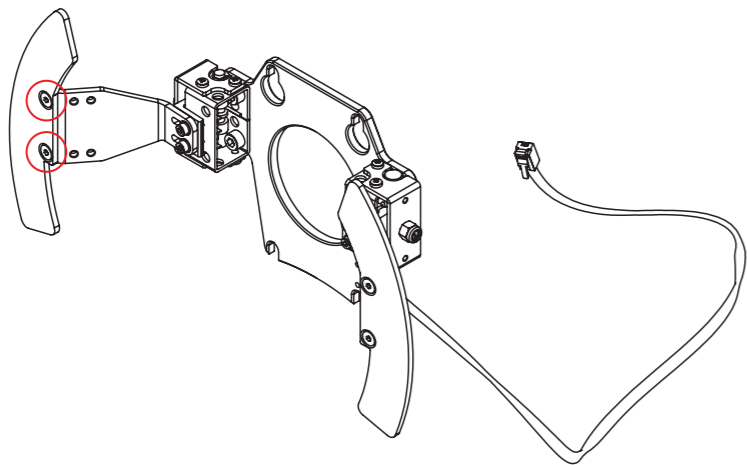
Option A



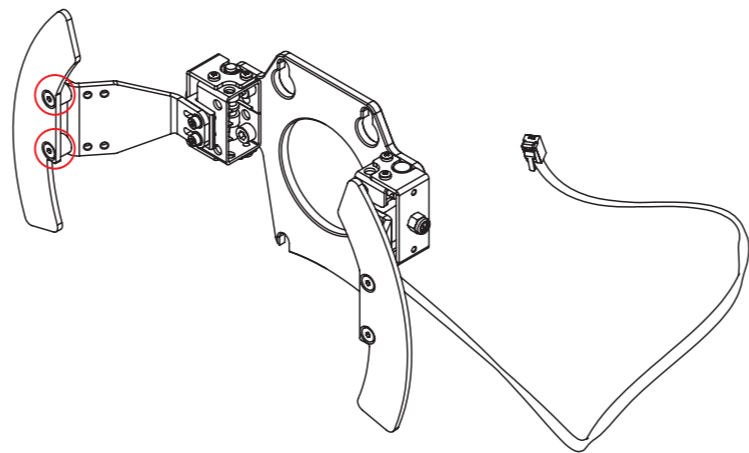
Option B



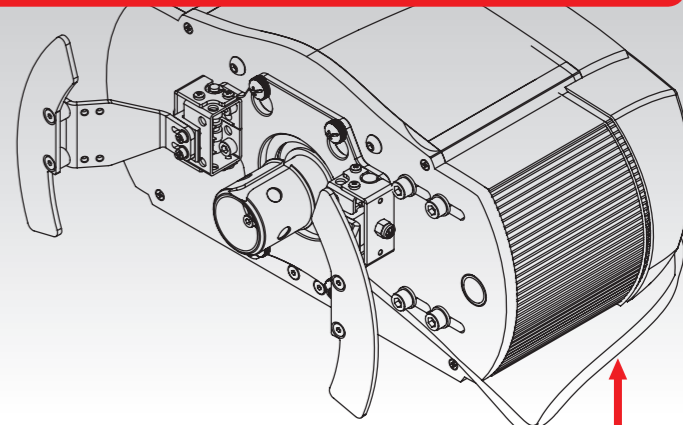
Option C



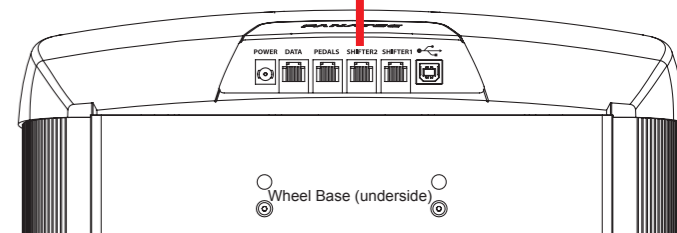
Option D



## CONNECTING TO WHEEL BASE



Connect into SHIFTER2



We recommend connecting the CS SSP to the SHIFTER2 port, as H-pattern shifters only work on the SHIFTER1 port. When connected, your CS SSP will be detected as a sequential shifter and the mapping may be manually assigned to the steering wheel shifter paddles using the PC driver.

  
**ENDOR**<sup>®</sup>

Fanatec<sup>®</sup> is a registered trademark of Endor AG  
Designed and developed by Endor AG in Germany