

ATTACHING THE RIM



Please download and install the latest PC driver and wheel base firmware before mounting the CSL Elite Steering Wheel P1 for Xbox One. You can obtain it at Fanatec's website (www.fanatec.com) in the download section.

1

Use fixing screw (M6 x 18mm flat head) and hex key from package contents.

2

Align wheel base axle to correct position.

Slide steering wheel onto wheel base axle.

3

Turn the steering wheel up side down to see the bottom side of the clamp ring to follow next step below.

4

Push steering wheel until the screw hole matches with hole on wheel base axle.

5

Place and tighten the fixing screw to fix the clamp ring mechanism. Use only the hex key from box contents.



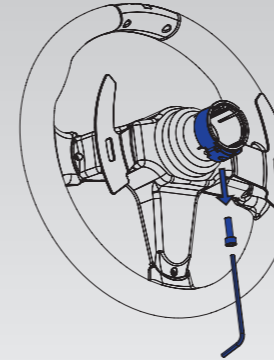
IMPORTANT: Tighten only by using the short lever of hex key!

IMPORTANT: Never use without screw!

DETACHING THE RIM

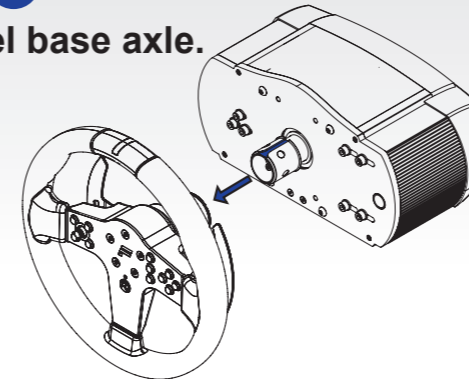
1

Loosen and remove the fixing screw and open clamp ring mechanism, use only the hex key which comes with the steering wheel!



2

Slide steering wheel off wheel base axle.



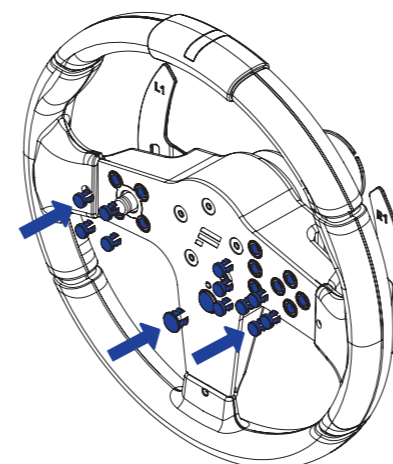
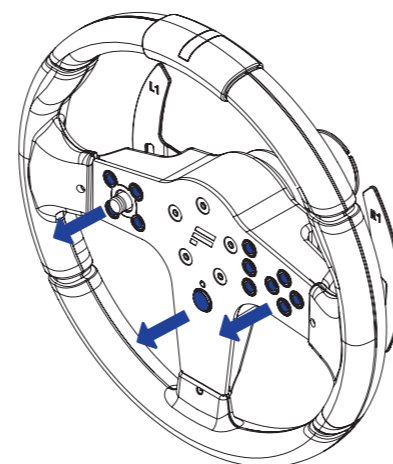
3

Store fixing screw and hex key safely for later use.



EXCHANGEABLE BUTTON CAPS

To detach the button caps, simply pull them out by hand. They can be replaced with the included set of racing style button caps for CSL Elite Steering Wheel P1.



CSL Elite Steering Wheel P1
for Xbox One



QuickGuide

EN

Manufactured by

ENDOR®

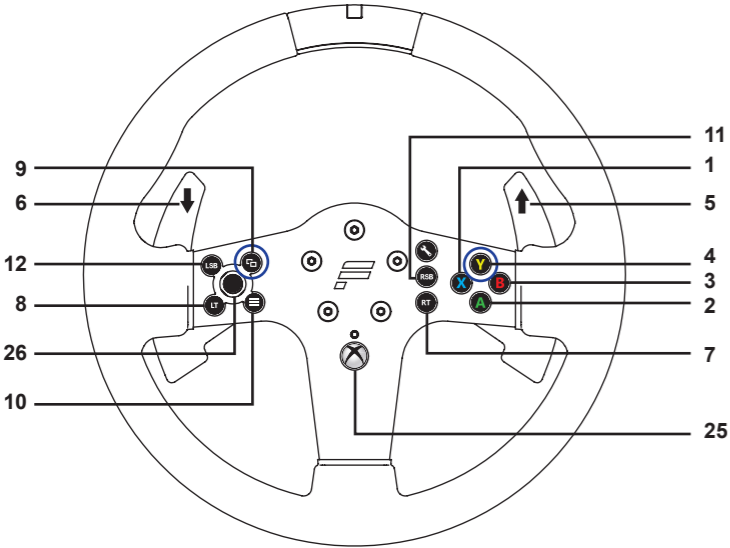
Fanatec® is a registered trademark of Endor AG
Designed and developed by Endor AG in Germany
Seligenthaler Straße 16 a - 84034 Landshut - Germany
Telephone: +49 (871) 9221-122 Fax: +49 (871) 9221-221
Email: info.webshop@fanatec.com
Internet: www.fanatec.com - www.endor.ag



www.fanatec.com

BUTTON MAPPING

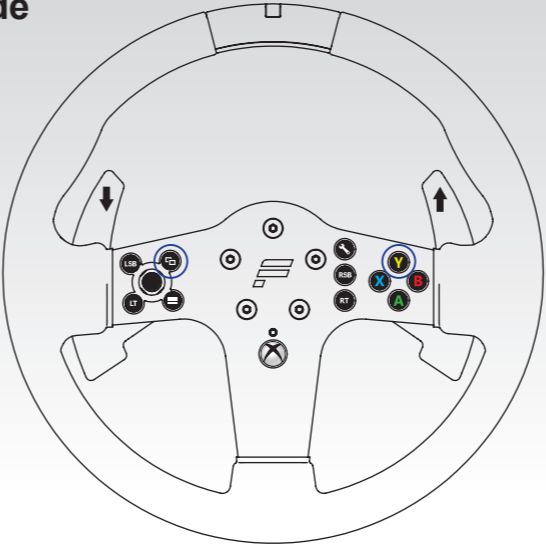
Button	Button no. PC	Xbox One
LT	8	LT 100% (brake)
RT	7	RT 100% (accelerator)
LSB	12	LSB -> LB (shift down)
RSB	11	RSB -> RB (shift up)
≡	10	MENU
☐	9	VIEW
A	2	A
B	3	B
X	1	X
Y	4	Y
↓ Shifter Paddle L	6	LB
↑ Shifter Paddle R	5	RB
D-pad press	26	Horn
D-pad left	D-pad left	D-pad left
D-pad right	D-pad right	D-pad right
D-pad up	D-pad up	D-pad up
D-pad down	D-pad down	D-pad down
✕	25	Guide



MODES

To switch between modes simultaneously press and hold the two buttons + , highlighted below, for one second. The wheel base LED indicates the active mode:

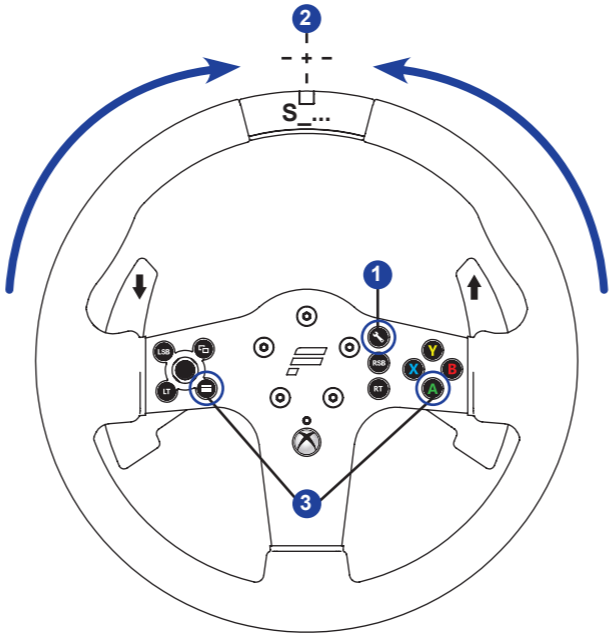
- Green means Xbox One mode
- Red means PC mode
- Blue means PS4™ mode*
- Purple means CSW V2 compatibility mode*



* not applicable for every Fanatec wheel base, please check the individual user manuals of your Fanatec wheel base.

CENTER CALIBRATION

If a center calibration is needed (e. g. after firmware update of wheel base) you need to enter the tuning menu by pressing button as shown on the graphic → “S_...” will appear on the display. Now turn the wheel to its center position and then press two buttons + at the same time to calibrate the wheel center.



- 1 Press tuning button
- 2 Turn the wheel to the center position
- 3 Press the two buttons + at the same time

SHIFTER CALIBRATION

To enter shifter calibration mode, simultaneously press the two buttons + , highlighted below. For the detailed process read shifter manual.



TUNING OPTIONS

To enter tuning menu press button . To navigate inside the menu, use the D-pad stick:

- Press D-pad up or down to access 5 setups
- Press D-pad right or left to go through the options and press or hold it up or down to change option values

