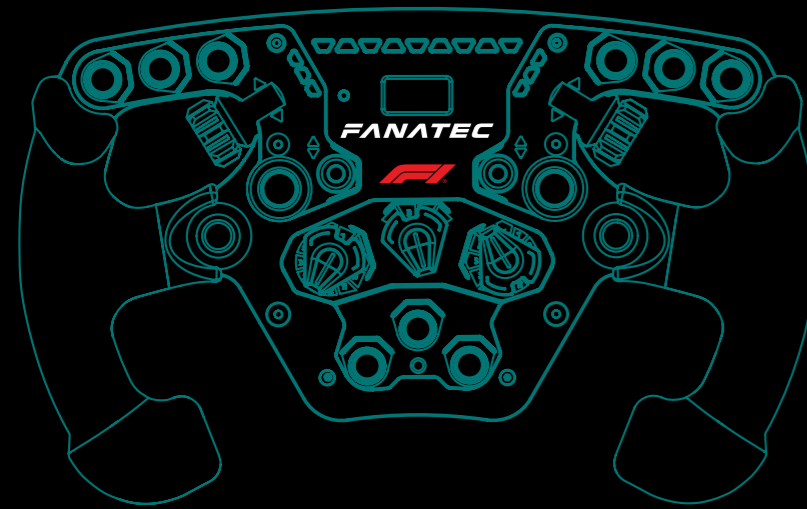


FANATEC®

CLUBSPORT STEERING WHEEL F1® 2023



SIMRACING

FANATEC®

Official Provider of Formula 1® Sim Racing

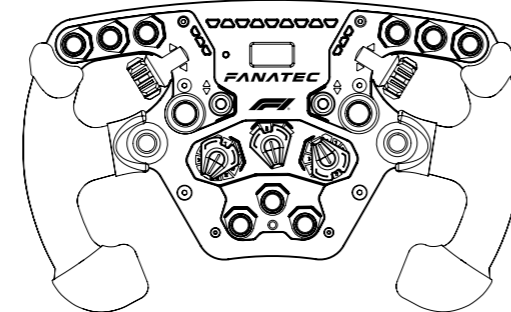
EN Quick Guide
FR Guide De Démarrage Rapide
DE Kurzanleitung
ES Guía Rápida
IT Guida Rapida
PT Guia Rápido



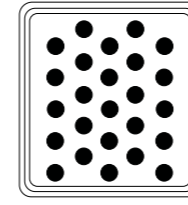
Rev. 01

A PACKAGE CONTENT

FR Contenu de l'emballage; DE Lieferumfang; ES Contenido del embalaje;
IT Contenuto della confezione; PT Conteúdo da embalagem



a 1x ClubSport Steering Wheel F1® 2023



b 1x Racing Style Button Caps

B GETTING STARTED

FR Pour commencer; DE Erste Schritte; ES Cómo comenzar; IT Come iniziare; PT Começando



VIDEO
MANUAL



Fanatec.com/QR/CS-F-V2.5-23



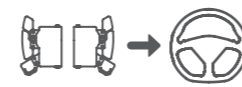
↓



Fanatec.com/driver



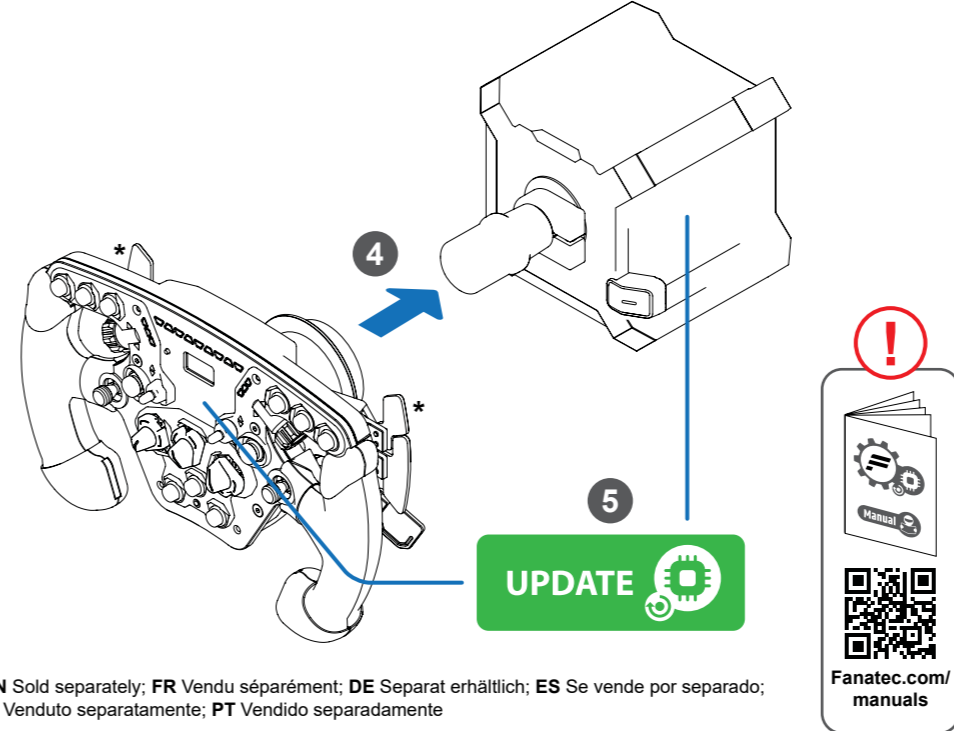
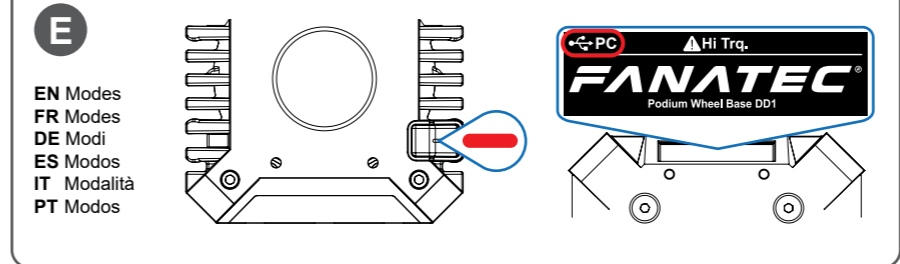
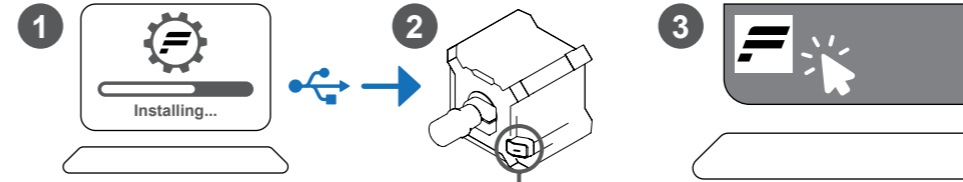
Fanatec.com/QR/QR-WS



Fanatec.com/QR/P-APM

C FIRMWARE UPDATE

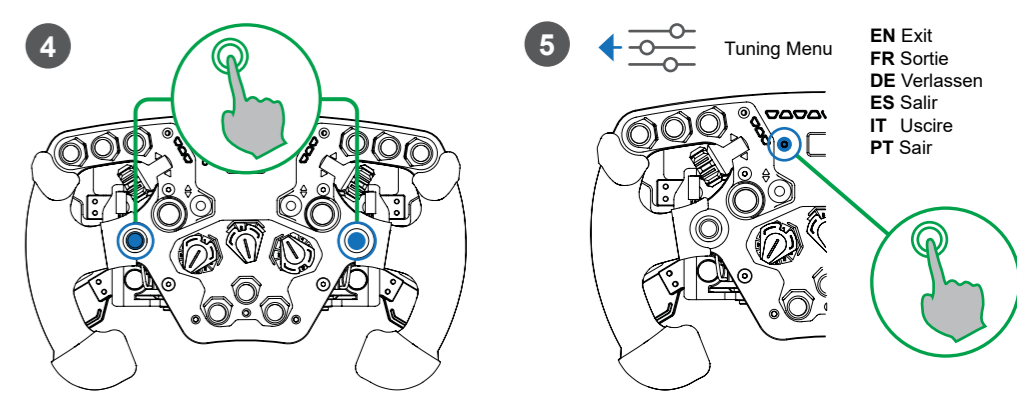
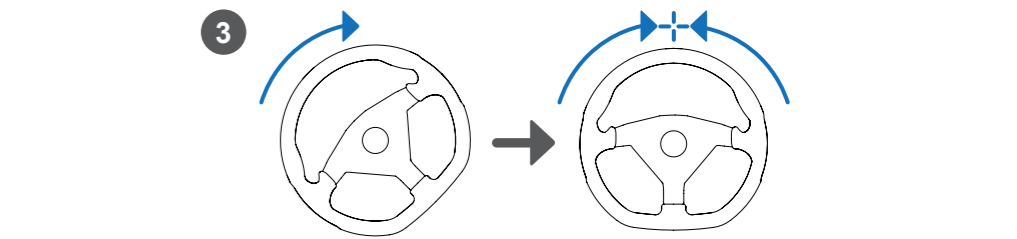
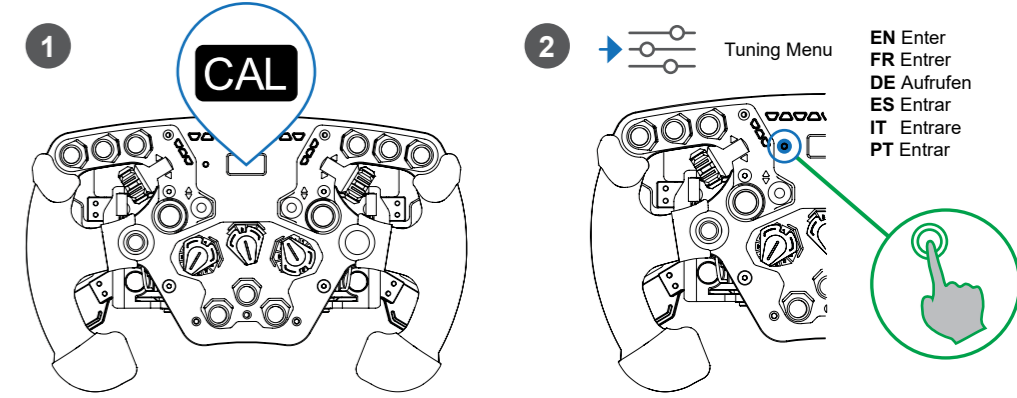
FR Mise à jour du firmware; DE Aktualisierung der Firmware; ES Actualización del firmware;
IT Aggiornamento del firmware; PT Atualização de Firmware



* EN Sold separately; FR Vendu séparément; DE Separat erhältlich; ES Se vende por separado;
IT Venduto separatamente; PT Vendido separadamente

D CENTRE CALIBRATION

FR Calibrage du centre de volant; DE Kalibrierung der Mittelstellung; ES Centrado del volante;
IT Calibrazione del centro del volante; PT Calibração do centro



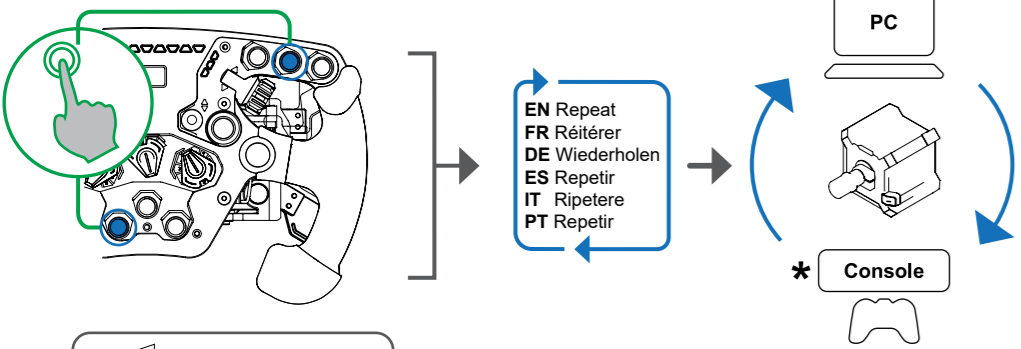
1

2

3

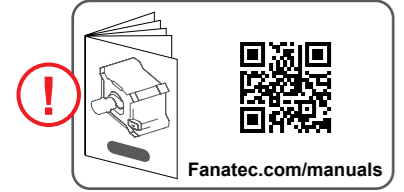
E MODES

FR Modes; DE Modi; ES Modos; IT Modalità; PT Modos



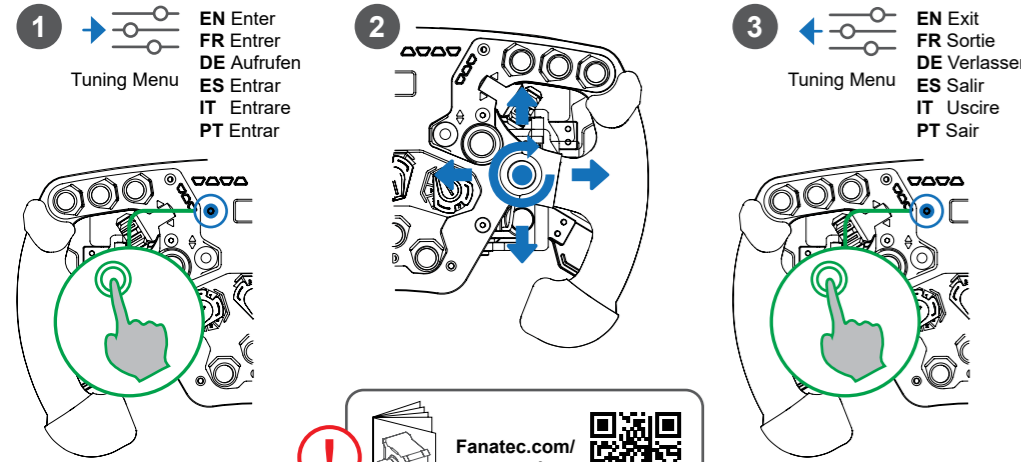
- EN Repeat
- FR Répéter
- DE Wiederholen
- ES Repetir
- IT Ripetere
- PT Repetir

* EN Wheel Base Dependent
FR Dépendant de la base du volant
DE Je nach Wheel Base
ES Dependiente de la Base del Volante
IT Dipendente dalla base del volante
PT Dependente da base do volante



F TUNING OPTIONS

FR Ajustement; DE Einstellung; ES Configuración; IT Regolazione; PT Configuração

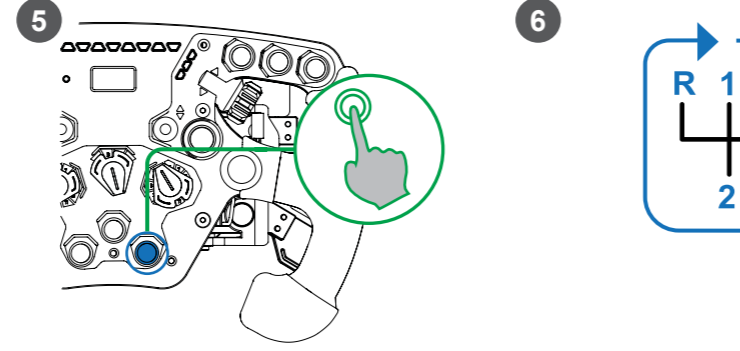
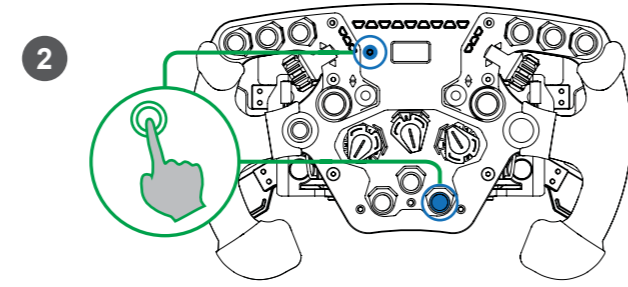
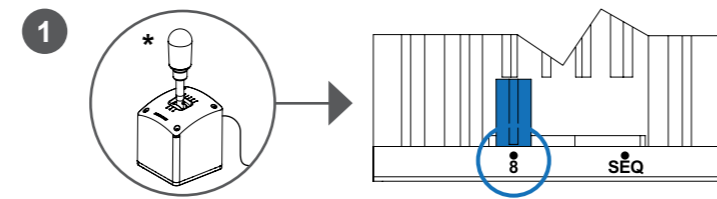


- 1 EN Enter
FR Entrer
DE Aufrufen
ES Entrar
IT Entrare
PT Entrar
- 2 EN Exit
FR Sortie
DE Verlassen
ES Salir
IT Uscire
PT Sair
- 3 EN Exit
FR Sortie
DE Verlassen
ES Salir
IT Uscire
PT Sair



G SHIFTER CALIBRATION

FR Calibrage du levier de vitesse; DE Kalibrierung des Schalthebels;
ES Calibración de la palanca de cambios; IT Calibrazione del cambio; PT Calibragem de mudanças



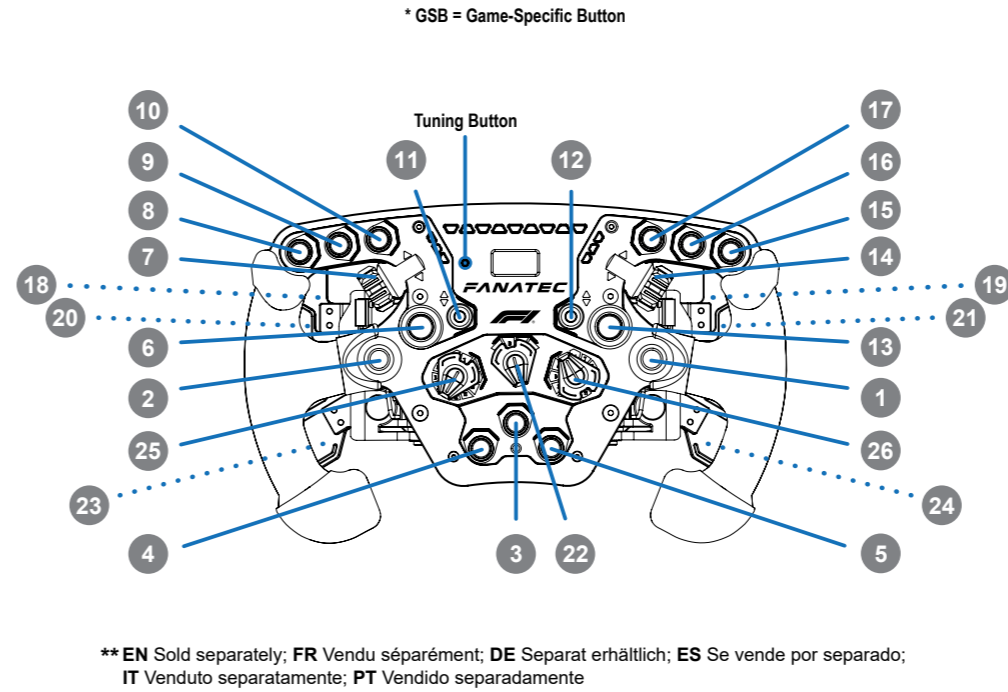
* EN Sold separately; FR Vendu séparément; DE Separat erhältlich; ES Se vende por separado;
IT Venduto separatamente; PT Vendido separadamente

H BUTTON MAPPING

FR Mappage des boutons; DE Tastenbelegung; ES Asignación de botones;
IT Mappatura dei pulsanti; PT Mapeamento de botões

#	PC	PlayStation®
1	Up, Down, Left, Right, Press - 25 Rotate Left - 23 / Right - 24	Up, Down, Left, Right, Press - *GSB 1 Rotate Left - *GSB 2 / Right - *GSB 3
2	Joystick	Joystick
3	26 (Press)	GSB 4*
4	22	PS
5	9	SHARE / CREATE
6	10	OPTIONS
7	11	R3
8	27 (Rotate - CW) / 21 (Rotate - CCW)	GSB 5* / GSB 6*
9	8	L2
10	12	L3
11	7	R2
12	34 (Up) / 32 (Down)	GSB 7* / GSB 8*
13	33 (Up) / 31 (Down)	GSB 9* / GSB 10*
14	2	Cross
15	36 (Rotate - CW) / 35 (Rotate - CCW)	GSB 11* / GSB 12*

#	PC	PlayStation®
15	3	Circle
16	4	Triangle
17	1	Square
18 **	61	GSB 13*
19 **	62	GSB 14*
20 **	6	L1
21 **	5	R1
22 **	Analogue Paddles: A = Clutch Bite Point B = Handbrake + Clutch C = Brake + Throttle D = Mappable Analogue Axes See Video Guide	
23		
24		
25	ENC: 37 / 38, MPS Pulse / Constant: 37 - 48	GSB 15 / 17* GSB 15 - 27*
26	ENC: 49 / 50, MPS Pulse / Constant: 49 - 60	GSB 27 / 28* GSB 27 - 38*



* EN Sold separately; FR Vendu séparément; DE Separat erhältlich; ES Se vende por separado;
IT Venduto separatamente; PT Vendido separadamente

I SUPPORT

FR Support technique; DE Unterstützung; ES Soporte técnico; IT Supporto tecnico; PT Suporte técnico



Fanatec.com/QR/CS-F-V2.5-23



Fanatec.com/app



Fanatec.com/support/faq

- EN The product warranty is provided by Endor AG. Refer to the included warranty sheet as well as the terms & conditions of Endor AG on fanatec.com.
- FR Ce produit est sous la garantie d'Endor AG. Reportez-vous aux fiches de garantie incluses ainsi qu'aux conditions générales d'Endor AG sur fanatec.com.
- DE Dieses Produkt unterliegt der Garantie der Endor AG. Beachten Sie die beiliegenden Garantieblätter sowie die Allgemeinen Geschäftsbedingungen der Endor AG auf fanatec.com.
- ES Este producto está bajo garantía de Endor AG. Consulte las hojas de garantía incluidas, así como los términos y condiciones de Endor AG en fanatec.com.
- IT Questo prodotto è coperto dalla garanzia di Endor AG. Fare riferimento ai fogli di garanzia inclusi nonché ai termini e condizioni di Endor AG su fanatec.com.
- PT Este produto está sob garantia da Endor AG. Consulte as folhas de garantia incluídas, bem como os termos e condições da Endor AG em fanatec.com.

China RoHS 2

China RoHS 2 refers to the Ministry of Industry and Information Technology Order No. 32, effective July 1, 2015, issued Management Methods for the Restriction of the Use of Hazardous Substances in Electrical and Electronic Products. To comply with China RoHS 2, we determined this product's Environmental Protection Use Period (EPUP) to be 10 years in accordance with the Marking for the Restricted Use of Hazardous Substances in Electrical and Electronic Products, SJT 11364-2014.

中国 RoHS 2 是指 2015 年 7 月 1 日起实施的工业和信息化部第 32 号“电子信息产品限制使用有害物质管理规定”。为了符合中国 RoHS 2 的要求，我们对本产品“电子信息产品限制使用有害物质”进行了规定。我们规定“电子信息产品限制使用有害物质”的 EPUP 为 10 年。

物料名称 Part Name	有害物质 Hazardous Substances				
	铅 (Pb)	汞 (Hg)	镉 (Cd)	六价铬 (Cr+6)	多溴联苯 (PBB)
塑料/树脂 (Plastic/Resin)	0	0	0	0	0
金属材料 (Metal parts)	0	0	0	0	0
其他所有零件 (Other enclosure components)	0	0	0	0	0
电路板零件 (PCBA)	0	0	0	0	0

本表格根据 SJT 11364 的规定编制。
This table is prepared in accordance with the provisions of SJT 11364-2014.
0: 表示该有害物质在该部件所有均质材料中的含量均符合 GB/T 26572 规定的限量要求。
0: Indicates that the hazardous substance contained in all of the homogeneous materials for this part is below the limit requirement of GB/T 26572.
X: 表示该有害物质在该部件的某一均质材料中的含量超过 GB/T 26572 规定的限量要求。
X: Indicates that the hazardous substance contained in at least one of the homogeneous materials used for this part is above the limit requirement of GB/T 26572.



Contact Us:
Endor AG
Lindstraße 1-84036 Landshut - Germany
Telephone: +49 (871) 9221-122
Email: info@fanatec.com
www.fanatec.com

FC

This device complies with part 15 of the FCC rules. The operation of this device is subject to the following two conditions:
• This device may not cause harmful interference, and must accept any interference received, including interference that may cause undesired operation.
• This device was not modified differently than described explicitly in this user manual.

NOTE: This device was tested and approved to the limitations for class B of digital devices according to part 15 of the FCC rules. This limitation should ensure an adequate protection against harmful interferences in residential areas. However, a warranty for the non-recurring of interferences is not assumed.
Do not modify the device differently than explicitly described in the product-related user manual. Nevertheless, if you do modify the device differently than explicitly described in the product-related manual, you can be determined to stop the operation of the device.

Importers:

Imported and distributed by Endor America LLC
8200 Wilshire Blvd, Suite 200 - Beverly Hills CA 90211 - USA
Telephone: +1 321-655-3524
Email: webshop@fanatec.com
Website: www.fanatec.com - www.endor.ag

Endor Australia Pty Ltd
3 Staley Street, California Gully, Vic, 3556 - Australia
Telephone: 661 453 979 40
Email: webshop@fanatec.com
Website: www.fanatec.com - www.endor.ag

Endor Japan Kabushikigaisya
E5001 3-13-1, Harumi Cyuo-ku Tokyo-to
Tokyo 104-0053 - Japan
Telephone: 03-6717-2719
Email: webshop@fanatec.com
Website: www.fanatec.com - www.endor.ag

Manufactured and distributed by
ENDOR
Fanatec® is a registered trademark of Endor AG
Designed and developed by Endor AG in Germany

E.ON-Allee 3 - 84036 Landshut - Germany
EU: 00800 0 FANATEC or +49 (871) 9221-122
US/CANADA: 011 800 0 FANATEC or +49 (871) 9221-122
AUSTRALIA: 00800 0 FANATEC or +49 (871) 9221-122
JAPAN: +81 306 7172-719
Email: info.webshop@fanatec.com
Website: www.fanatec.com - www.endor.ag
Made in China