

Firmware Update for Fanatec Wheel using FanatecFwUpdater

This installation guide shows you how to install a new Firmware to your CSR wheel. Please read the instructions carefully and make sure you do not interrupt the update process.

By updating the firmware you always risk the operability of your device so please make an update only if you have serious issues and if the update was recommended by the Fanatec support team. If the update was not performed properly you might lose the warranty on the device.

System requirements:

- Windows XP 32, Windows Vista (32/64) or Windows 7 (32/64)
We can only assure a working update if the Windows version is installed completely fresh on your PC. Other programs might interfere with the update.
- Microsoft .NET Framework 3.5 has to be installed

Note: You might see some warning messages under Windows Vista and Windows 7 which you can ignore. Please always confirm these messages and continue. It is required to have administrator rights on your PC to run the update.

Step 1

Reboot the PC. Connect the wheel to your PC by USB and to the power supply. Make sure the wheel is powered off.

Step 2

Turn off all other programs, especially antivirus programs (**IMPORTANT!**)
Disconnect all USB devices except mouse and keyboard. (especially other controllers)

Step 3

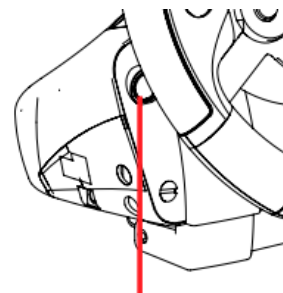
Extract: FanatecFwUpdate_XXX_XXX.zip to your desktop.

Step 4

Plug in the USB Cable for the wheel into a Windows PC. If you experience problems during flashing, use a different USB port.

Step 5

Push and hold the Xbox Guide Button, then push the power button.
Wait about 10 seconds (Xbox Guide Button is still pushed), after this, the first Ring of Light LED will be lit. Continue holding the Xbox Guide Button for another 3 seconds before you release it. The wheel is in the bootloader mode now.



Xbox 360 Guide button

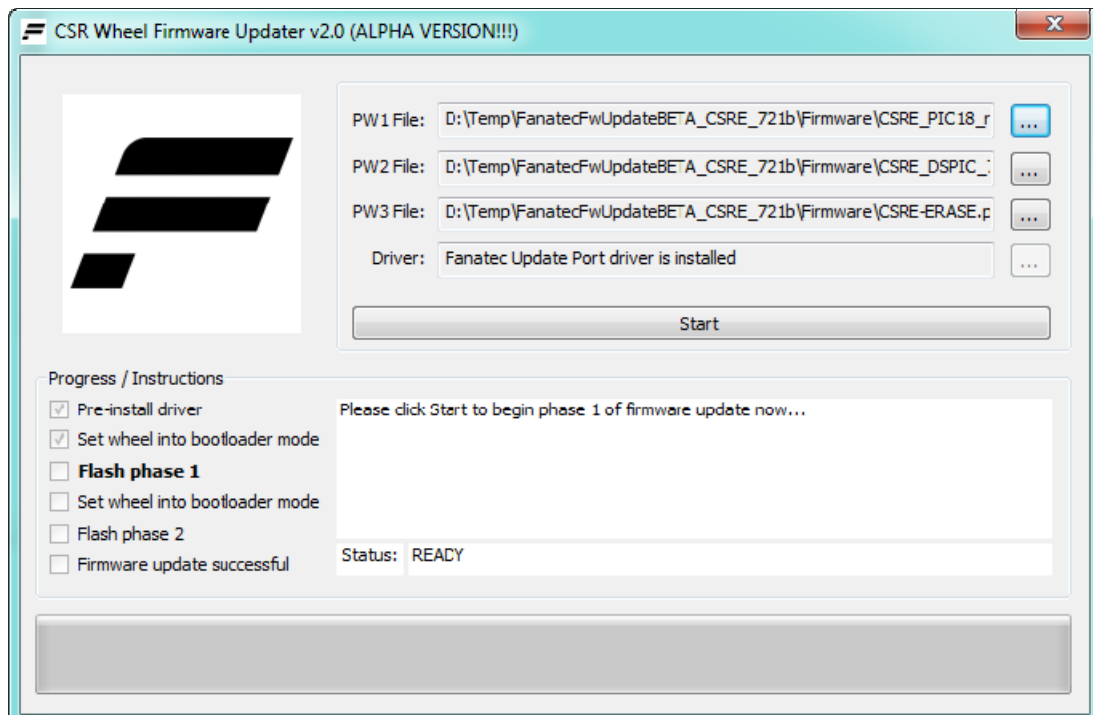
Step 6

Move to the new folder on your desktop ("FanatecFwUpdate_XXX_XXX") and open the 32bit or 64bit sub-folder according to your operating system (Check: Start -> Control Panel -> System -> System type -> ...).

Doubleclick „FanatecWheelFirmwareUpdater_XX.exe“:

Step 7

If you did not change the folder structure of the unpacked .zip file, the updater automatically detects the correct files. You can also change them manually.

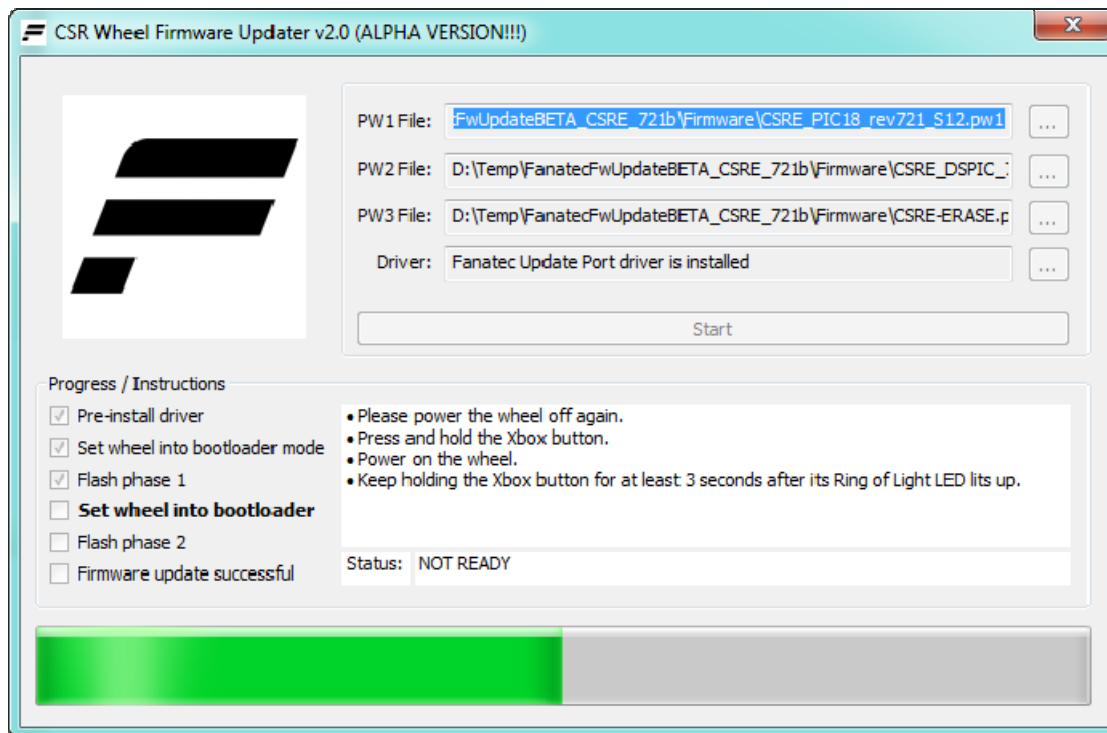


Step 8 (optional)

If you never performed an update before on this PC you also need to select the driver file which is located in the sub-folder "USB_driver".

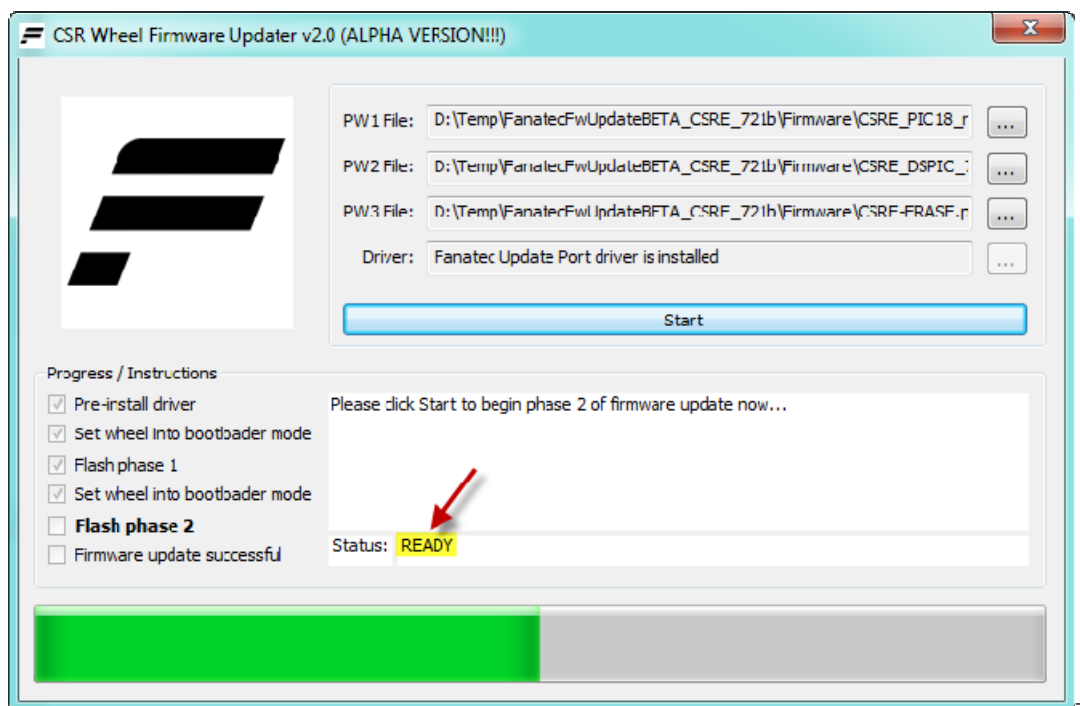
Step 9

Press “Start” and wait until phase1 is complete.



Step 10

Power off the wheel again. Restart the wheel a second time **in bootloader mode** like described above (Step 5). You will now see this screen:



Step 11

Press "Start" and wait until the update is finished-> Phase2 is complete.

If the update was successful the wheel will restart automatically this time. Now close the Firmware update tool.

Step 12

Test if the FW was successful. The wheel should show "---" on the TUNING display. Press and hold A+B buttons together. Then additionally press the 2 lower red buttons on the wheel rim. You will now see the firmware version on the display and the fan will be set to "OFF" which means that the fans are in temperature controlled mode and not always fully running.

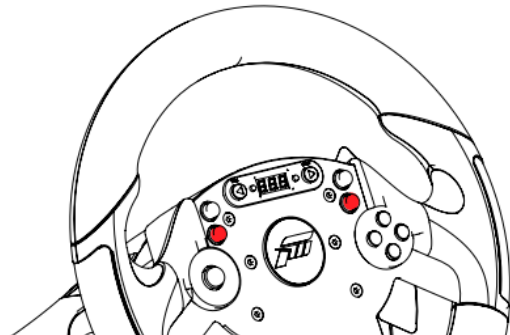
Step 13

Set wheel center Calibration:

Enter PC Mode by pressing the back button (big button on left side of the display).



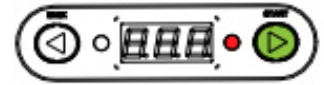
Turn the wheel to its center position and press the the lower two red buttons on the rim. The wheel position will be saved as new wheel center.



Step 15

If you use the h-pattern CSR or Porsche shifter you will have to calibrate it after the firmware update:

Press **"Start Button"** + **"Tuning Button"** at the same time



Bring the 7GS into neutral position and press the "Start Button".

6_n

Enter reverse gear and press **"Start Button"**

6_r

Enter 1st gear and press **"Start Button"**

6_1

Enter 2nd gear and press **"Start Button"**

6_2

Enter 3rd gear and press **"Start Button"**

6_3

Enter 4th gear and press **"Start Button"**

6_4

Enter 5th gear and press **"Start Button"**

6_5

Enter 6th gear and press **"Start Button"**

6_6

Shifter calibration finished. You can check the proper functionality with use of the PC driver menu.

Note: If you had a problem and you will update again, you must run the FanatecFwUpdate_XXX again and perform the update process from the start because you can't return to previous step