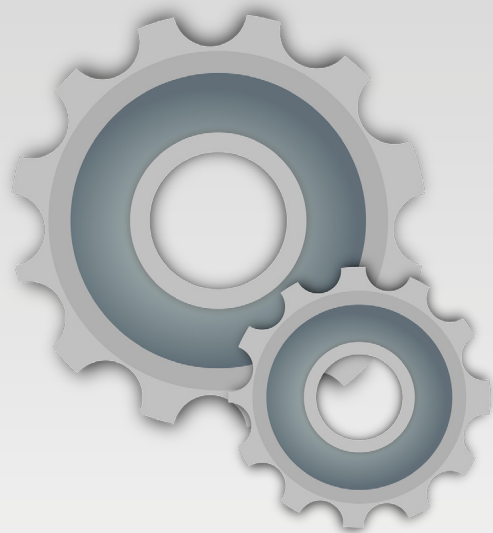


FANATEC®

Driver & Firmware Instructions



Manual

EN



Thank you for choosing

FANATEC[®]

To get the most out of your FANATEC[®] gear, please read this manual before use.

IMPORTANT: For additional or device specific instructions, read the full manual available on each product page.

Please read the “changelog.txt” file which is located in the extracted driver folder to get an overview of what has changed since the last driver and known issues that might exist. For additional information or to report an issue, please visit the driver section of our forum.

INDEX

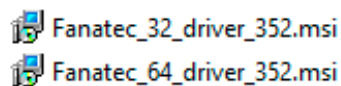
1. Driver Installation	1-2
1.1. Choosing the correct file.....	1
1.2. Installation	2
2. Driver User Interface	2-6
2.1. Open driver.....	2-3
2.2. Pop up messages	3
2.3. Overview	4-6
3. Firmware Update	7-13
3.1. Wheel Base Firmware.....	8-10
3.2. Wheel Base Motor Firmware.....	10-11
3.3. Steering Wheel Firmware	11-12
3.4. USB Pedals Firmware.....	12-13
4. Function Test	13-16
5. Settings	17-19
5.1. Settings.....	18
5.2. Calibration	19
6. Tuning Menu	20-21
7. Mouse Settings.....	21-22
8. Troubleshooting	23-25
8.1. Device not visible or driver user interface doesn't open	23-24
8.2. Reverting to older driver / firmware	24-25

1 DRIVER INSTALLATION

1.1. Choosing the correct file


IMPORTANT: A Windows based PC is mandatory!

The zip-file includes two installation files:



The first number stands for which operating system the driver is meant: 32-bit or 64-bit. The last number refers to the version number of the driver.

Most modern PCs run Windows in 64-bit, you can check this yourself before choosing the file:

1. Press the Windows Key on your keyboard .
2. Type: "system information", then press enter.
3. Search for the line named, "System Type".

x86 = 32-bit

x64 = 64-bit

Item	Value
OS Name	Microsoft Windows 10 Pro
Version	10.0.18362 Build 18362
Other OS Description	Not Available
OS Manufacturer	Microsoft Corporation
System Name	USER-PC
System Manufacturer	System manufacturer
System Model	System Product Name
System Type	x64-based PC
System SKU	SKU
Processor	AMD Ryzen 7 2700X Eight-Core Processor, 3700 Mhz, 8 Core(s), 8 Logical Pro...
BIOS Version/Date	American Megatrends Inc. 3803, 22/01/2018
SMBIOS Version	3.1

1.2. Installation

1. Initialise the correct file > Run the executable file chosen in 1.1 with the help of the information above > Execute the correct application with the help of the information above.
2. Click “Next”.
3. Read and accept the License Agreement, then click Next.
4. Click “Next” or choose a different folder if you prefer.
5. Click “Install” and accept the pop-up message that might appear.
6. Click “Finish”.
7. A message will appear prompting a Windows restart which will complete the installation. It is recommended to restart your PC immediately.

If you encounter any issues, refer to section “9. Troubleshooting” in this manual.

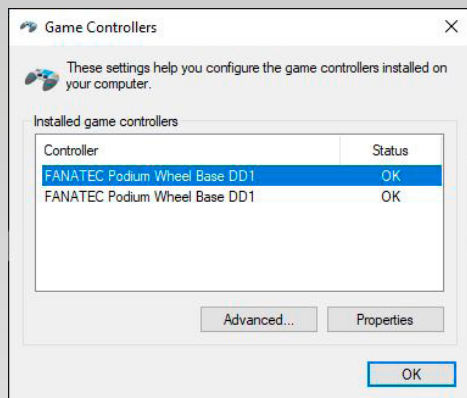
2 DRIVER USER INTERFACE

2.1. Open driver user interface

To access the driver user interface, the device needs to be connected to a PC via USB and the wheel base needs to be in PC Mode (refer to the device’s manual regarding mode changing).



The driver user interface can be accessed through the desktop shortcut, “Fanatec Wheel Property Page”. Or alternatively by using the Windows key on your keyboard and typing in “USB-Gamecontroller”.



To open the driver user interface, double-click on the device of your choice.

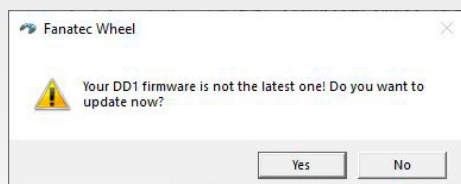
NOTE: Some wheel bases such as the CSL E WB+ (PS4), CS WB V2.5, and Podium DDs will be shown as two devices which is normal. Selecting one over the other will make no difference.

Pedals will only be shown if they are connected separately via USB as a stand-alone device.

If you encounter an issue, refer to section “9. Troubleshooting” of this manual.

2.2. Pop-up Messages

If the driver you have installed contains new firmware versions which have not yet been flashed, you will be prompted via a pop-up message to update the firmware.



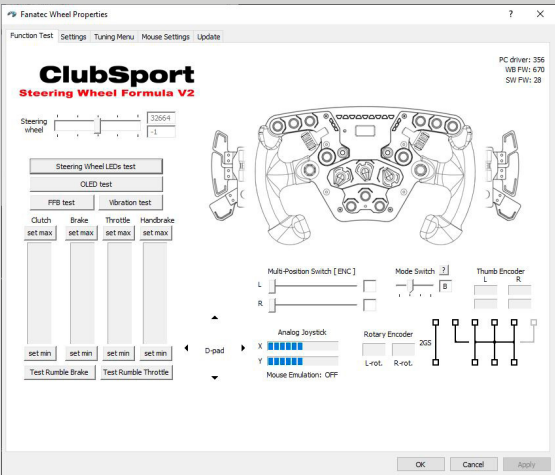
Accept the prompt by clicking “Yes” and follow the instructions on how to update the firmware (3. Firmware Updates).

IMPORTANT: Always re-open the driver user interface after you have completed a firmware update to check if more necessary updates are available and to check basic functionality (4. Function Test), and calibrate your device (5.2. Calibration).

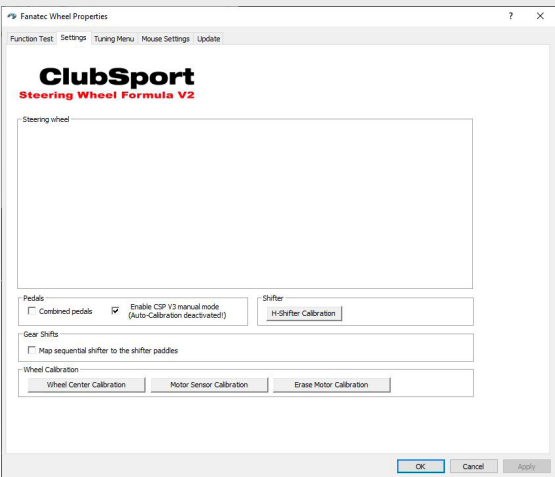


2.3. Driver User Interface Overview

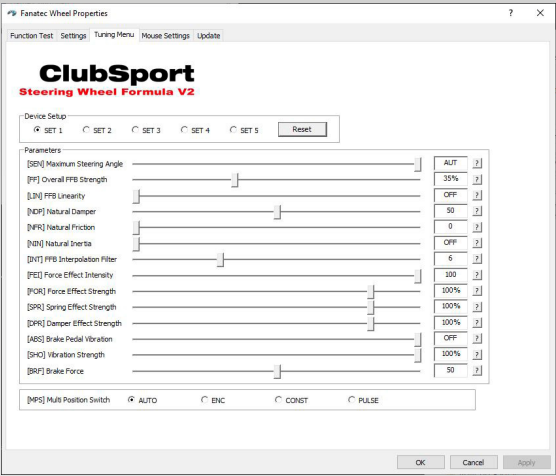
Function Test tab to test your devices (4.).



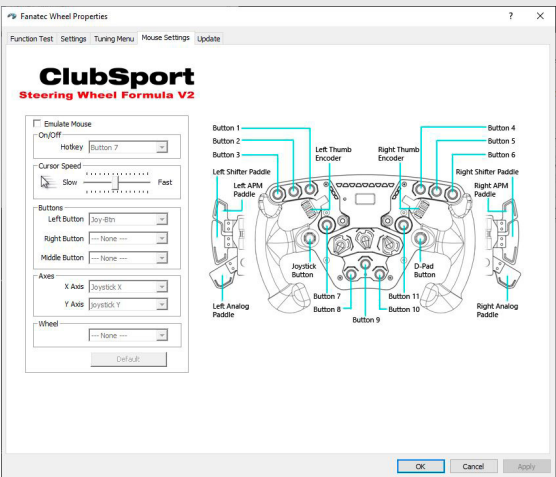
Settings tab to adjust options which are only available in the driver and to calibrate the connected hardware (5.).



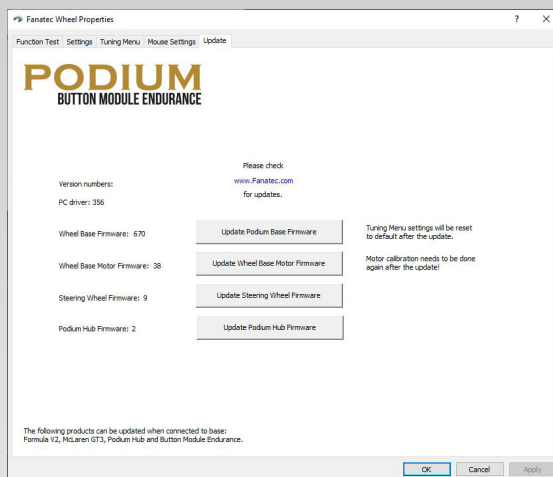
Tuning Menu settings which are also available on your wheel can be adjusted here (6.).



Mouse Settings tab to enable and configure the mouse emulation (7.).



Update the individual firmware versions (3.).



NOTE: The general look of the pages may vary depending on the connected hardware. For device specific information, refer to the corresponding user manual for each device.

Firmware updates will be done through the upcoming Firmware Manager in future.

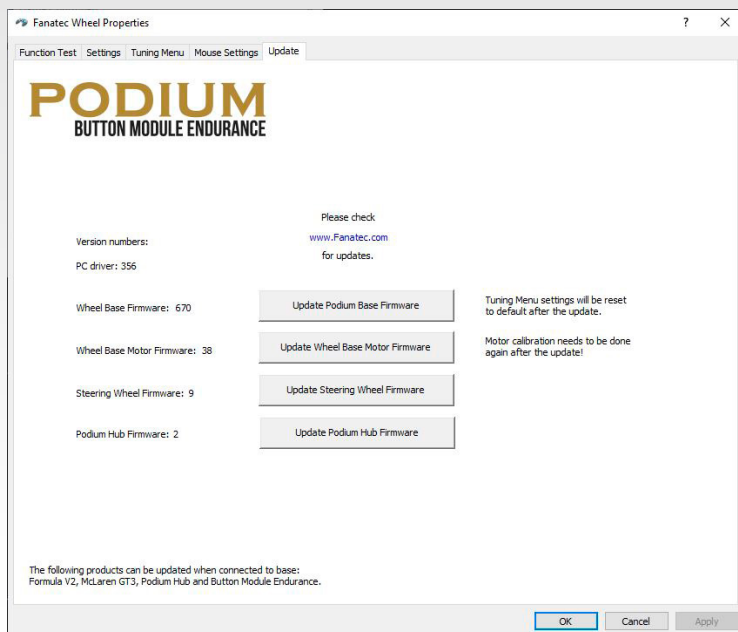
In addition to following this manual, watch our **driver and firmware update video** on our **official Fanatec YouTube channel**.

3**FIRMWARE UPDATE**

Each driver contains firmware for the following hardware:

- Wheel Bases
- Selected Steering Wheels
- USB Pedals
- ClubSport USB Adaptor

IMPORTANT: If you have steering wheels mentioned above, you should always connect them to the wheel base after installing a new driver to check if a firmware update is available.

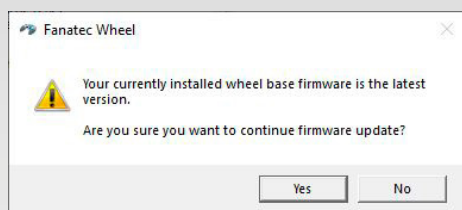


NOTE: This overview looks different for each hardware configuration. Depending on your connected hardware, the Update tab will show between 1 and 4 buttons.

The driver will automatically prompt via a pop-up message to update if it contains a more recent firmware version than currently installed.

You can start a firmware update manually by clicking on the update button.

You can also check if the firmware is already up to date by doing this as it will show a pop-up message if the driver does not have a later firmware version than the already installed version.

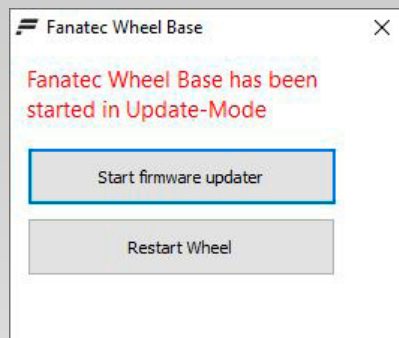


IMPORTANT: The pop-up prompt messages always only refer to the firmware included in the driver. The currently installed driver does not know if there might be a more recent firmware available in a newer driver. For more recent firmware, a new driver package must be downloaded and installed (Check product pages regularly as there is no auto-update feature available).

3.1. Wheel Base Firmware

NOTE: Updating the wheel base firmware will reset the Tuning Menu settings to default. Take notes of your current settings or use our "FanaLab" software to save them.

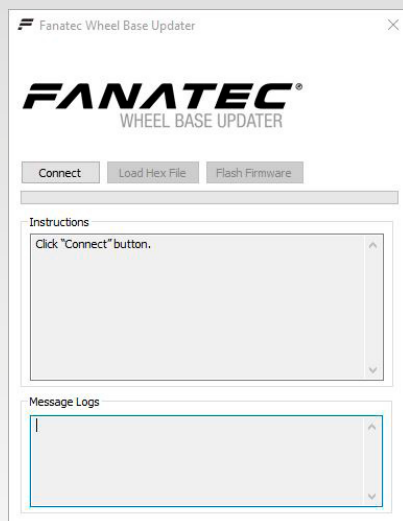
1. There are three ways a base firmware update can be initiated.
 - Accepting the pop-up message which advises to update the firmware.
 - Clicking the “Update Wheel Base Firmware” button in the Update tab.
 - Starting the wheel base in the updater mode directly by holding the power button pressed for 10 seconds.



NOTE: The “Restart Wheel” button also serves as a cancellation button should you choose not to start the update process.

2. Click “Start firmware updater” which opens the updater window.
3. Focus on the “Instructions” box which instruct you on what to do next.
4. Click “Connect”.
5. Click “Flash Firmware” which will start the process. Do not turn off your base!

NOTE: The “Load Hex File” button is not needed as the correct file is automatically loaded.



7. The wheel base will restart automatically when the firmware is flashed. Do not touch the shaft or wheel while it rotates.
8. Again, keep an eye on the “Instructions” box as it will instruct you on what should be done next after the update.
9. When the green progress bar is full, the “Message Logs” box shows “Firmware update completed successfully” and you can close the Updater window.

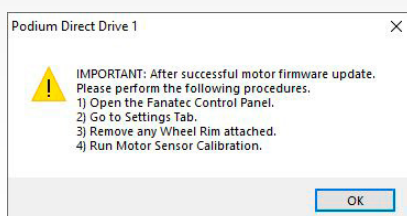
10. Always re-open the Fanatec Property Page after an update to make sure everything is working. Check if additional updates are available and calibrate your hardware. “5.2. Calibration” explains how this process works.

NOTE: If an Xbox steering wheel is connected, the wheel base will boot into Xbox mode. The steering wheel quick guide instructs on how to change back to PC mode.

A Podium DD base may have the fan running at full speed afterwards. This is normal when the Motor Firmware needs to be updated as well.

3.2. Wheel Base Motor Firmware

1. There are two ways a motor firmware update can be initiated.
 - Accepting the pop-up message which advises to update the firmware.
 - Clicking the “Update Wheel Base Motor Firmware” button in the Update tab.
2. Focus on the “Message Logs” box which will also instruct you on what to do next.
3. Click “Connect”.
4. The file is loaded automatically, no need to select one.
5. Click “Flash Firmware” which will start the process. Do not turn off your base!
6. The wheel base will restart automatically when the firmware is flashed. Do not touch the shaft or wheel while it rotates.
7. If a Podium DD is updated, a pop-up message will inform you that the motor sensor needs calibration. This is also described in “5.2. Calibration”.



8. When the green progress bar is full, the “Message Logs” box shows “Update process is completed”. You can then close the Updater window.
9. Always re-open the Fanatec Property Page after an update to make sure everything is working. Check if additional updates are available and calibrate your hardware. “5.2. Calibration” explains how this process works.

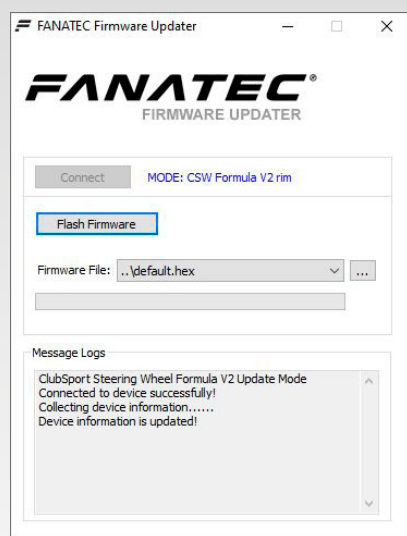
3.3. Steering Wheel Firmware

If you have a steering wheel, hub, or module listed below, you should always connect it to the base after installing a new driver to check if a new firmware version is available.

- CSL Elite McLaren GT3
- ClubSport Steering Wheel Formula V2
- Podium Hub
- Podium Button Module Endurance

1. There are two ways a steering wheel firmware update can be initiated.

- Accepting the pop-up message which advises to update the firmware.
- Click the “Update Wheel Steering Wheel Firmware” button in the Update tab.



2. Focus on the “Instructions” box which will also instruct you what to do next.
3. Click “Connect”.
4. The file is loaded automatically, no need to select one.
5. Click “Flash Firmware” which will start the process. Do not turn off your base!

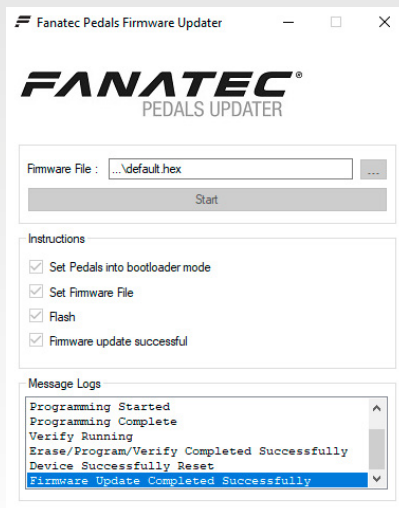
6. The wheel base will restart automatically when the firmware is flashed. Do not touch the shaft or wheel while it rotates!
7. Again, keep an eye on the Instructions box as it will give important information on what should be done next after the update.
8. When the green progress bar is full, the “Message Logs” box shows “Firmware update completed successfully”. You can then close the Updater window.
9. Always re-open the Fanatec Property Page after an update to make sure everything is working. Check if additional updates are available and calibrate your hardware. “5.2. Calibration” explains how this process works.

3.4. USB Pedals Firmware

If you have a pedal set listed below, you should always connect them to a PC directly via USB after installing a new driver to check if a new firmware version is available for them.

- ClubSport Pedals V3
- ClubSport Pedals V3 Inverted
- CSL Elite Pedals with Load Cell Kit

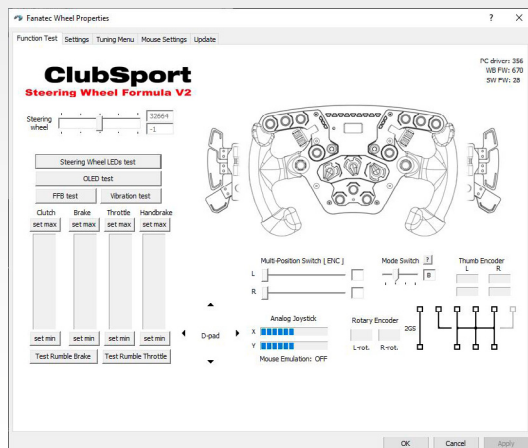
1. There are two ways a pedal set firmware update can be initiated.
 - Accepting the pop-up message which advises to update the firmware.
 - Click the “Update CSP V3 Firmware” button for example, in the Update tab.
2. Focus on the “Instructions” box which will also instruct you what to do next.
3. Click “Start”.



4. The file is loaded automatically, no need to select one.
5. Again, keep an eye on the Instructions box as it will give important information on what should be done next after the update.
6. When the green progress bar is full, the “Message Logs” box shows “Firmware update completed successfully”. You can then close the Updater window.
7. Always re-open the Fanatec Property Page after an update to make sure everything is working. Check if additional updates are available and calibrate your hardware.

NOTE: In the case of combining the Podium Hub and Button Module Endurance, this needs to be done to each one of them. If you have issues updating the Podium Hub, disconnect the Button Module Endurance connector from the Podium Hub and reconnect it again after the firmware update of the Podium Hub. Firmware updates can be done through the driver when using a ClubSport USB Adapter connected directly to a PC via USB.

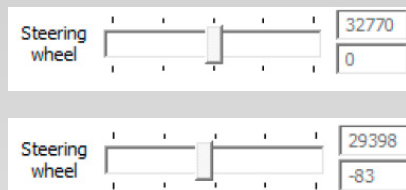
4 FUNCTION TEST



In this tab, you can test the functionality of the connected hardware. The look of this page varies depending on the connected hardware.

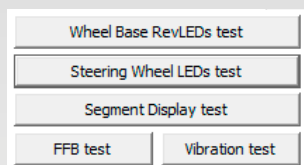
NOTE: The following boxes may or may not be visible depending on the connected hardware.

Check Steering Wheel Centre:



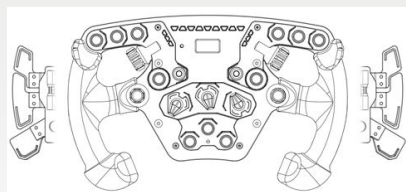
To the left, you will see the current steering angle, the indicator gives you a rough overview and the number in the bottom right shows the exact degrees of rotation. If your steering wheel is in the middle, the number should be "0". If this is not the case, you can follow the calibration instructions of "5.2. Calibration" to centre the wheel.

Test LED, Display, FFB, and Vibration:



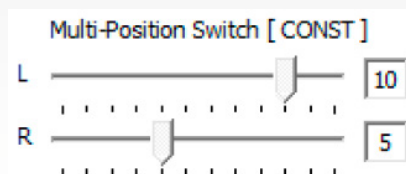
This will only be visible when a steering wheel or wheel base with LEDs is connected. The first button activates the LEDs of your wheel base. The second button activates the LEDs of your steering wheel. The third button will test the steering wheel display with an animation. The fourth button (left) will shake the wheel with FFB effects. The fifth button (right) will trigger the wheel's vibration motors.

Test Steering Wheel Button Inputs:



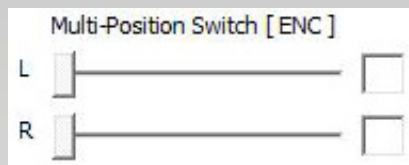
Here you can test all standard button inputs. A blue indicator will appear when activating buttons or shifter paddles on the picture of the steering wheel. More complex inputs such as rotary encoders, thumb encoders, Multi-Position Switches, D-Pad, analogue joysticks, and your shifter can be tested below the picture.

Test Multi-Position Switch:



The mode that the MPS is currently in is shown in the square brackets ["MODE"] (Modes can be adjusted in the Tuning Menu. Details available in the wheel quick guide).

In modes [CONST] and [PULSE] the indicator and number show the current positions of the left and right MPS.

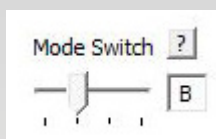


In mode [ENC] the indicator is inactive and stays to the left. An input of the left or right MPS will be shown as a quick impulse in the two boxes on the right.

“+” if the MPS is rotated to the right.

“-” if the MPS is rotated to the left.

Mode Switch:



The Mode Switch indicator and letter in the box show in which mode the analogue paddles of the steering wheel are in. Details available in the wheel quick guide.

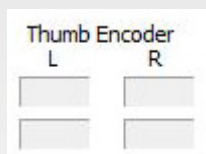
A: Dual Clutch Bite Point Mode, both paddles are mapped to the clutch pedal.

B: Left paddle mapped to clutch pedal, right paddle mapped to handbrake.

C: Left paddle mapped to brake pedal, right paddle mapped to throttle pedal.

D: Both axes replace the analogue joystick and can be mapped freely in-game.

Thumb Encoder:



Here you can see the input of the left and right thumb encoder. An input will be shown as a blue square when you rotate them.

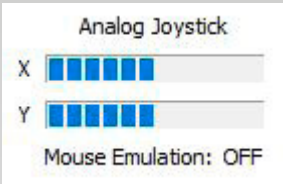
The upper boxes indicate a left rotation. The lower boxes indicate a right rotation.

D-Pad:



The D-pad arrows (up, down, left, right) change their colour from black to blue when the corresponding direction is pressed on the D-Pad or FunkySwitch™ of the attached steering wheel.

Analogue Joystick:



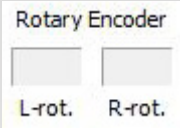
The analogue stick of the steering wheel can be tested here.

X: Left and right movement.

Y: Up and down movement.

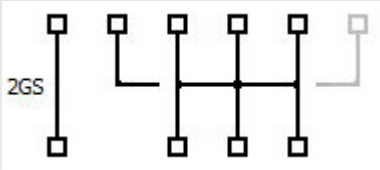
If the Mode Switch shows “D” this reacts to the analogue clutch paddles. The stick can be used to control the mouse, refer to section “7. Mouse Emulation”.

Rotary Encoder:



This shows the rotary encoder input of the FunkySwitch™. A blue square will be displayed in one of the two boxes if the FunkySwitch™ gets rotated left or right.

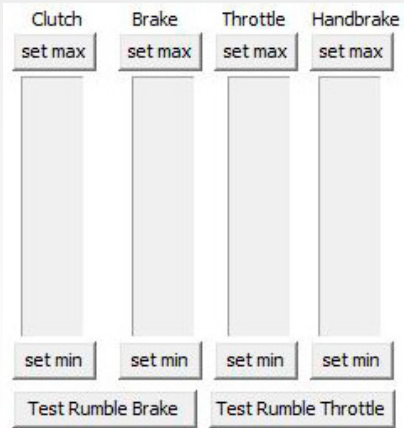
H-Pattern and SEQ-Shifter:



2GS on the left shows input when the shifter is in SEQ mode.

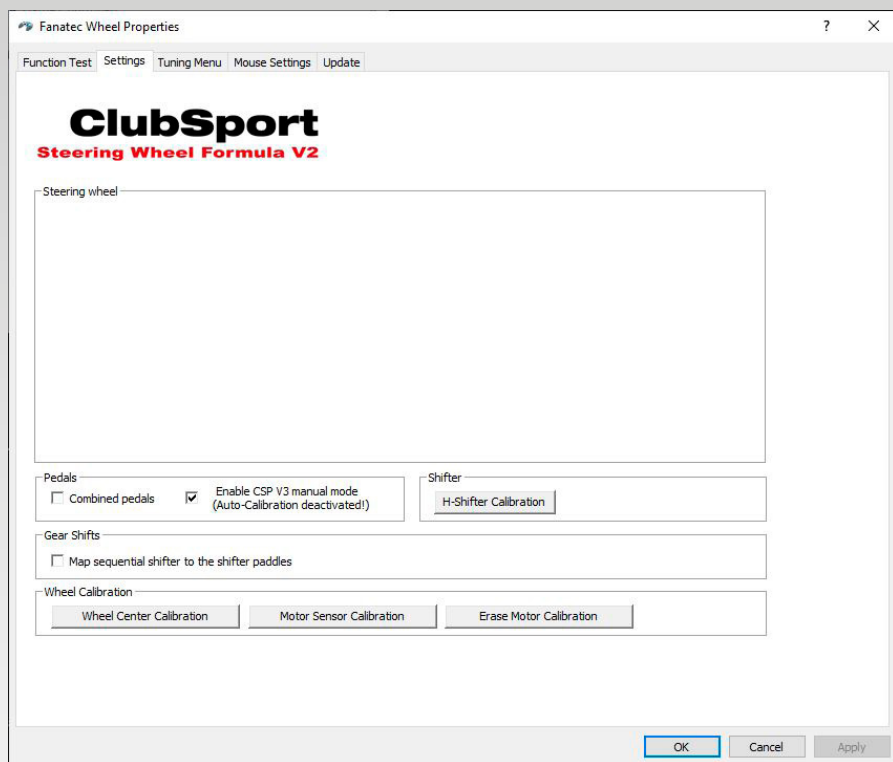
When in H-Pattern mode, the boxes of each gear fill in red to indicate the position of the shifter. If you experience issues here, you need to re-calibrate the shifter. Either refer to the quick guide or “5.2. Calibration”.

Test and adjust pedals and handbrake:



Blue bars rising from bottom to top show the input of clutch, brake, throttle, and the handbrake. If the Mode Switch is in position A, B or C, inputs by the analogue paddles on the steering wheel will be reflected here as well. By default, the “set max” and “set min” buttons are not visible, and the pedals calibrate themselves. On the Settings tab of the driver user interface, the manual calibration can be activated which will then show the “set min” and “set max” buttons. This is described in “5. Settings”.

The vibration feature of the brake and throttle pedal can be tested with the “Test Rumble...” buttons.

5**SETTINGS**

In this tab, you can adjust settings (5.1.) and calibrate your hardware (5.2.) which is connected to the device you have chosen to open the driver user interface. The look of this page varies depending on the connected hardware.

5.1. Settings

NOTE: The following boxes may or may not be visible depending on the connected hardware.



Combined pedals will merge the throttle and brake pedal into one axis. This can be helpful to get compatibility for older games, but is rarely needed.



Enabling manual mode will deactivate the Auto-Calibration and add “set min” and “set max” buttons for each pedal and handbrake input (4. Function Test).



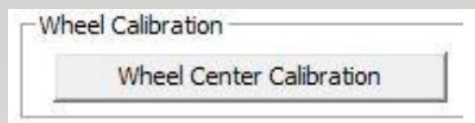
With this checkbox, you can bind the sequential shifter inputs to the shifter paddles. Pushing the shifter lever will downshift and pulling will upshift.



This setting allows adjustment of the maximum steering angle for wheel bases such as the CSL E or CSW 1.0 which does not support accessing the Tuning Menu within the driver. The Tuning Menu setting, “SEN” must be set to “AUTO”. If not, this slide has no effect.

5.2. Calibration

Wheel Centre Calibration:



After every wheel base firmware update the wheel centre must be calibrated. Centre the wheel, then click on the button and confirm the message. The new centre can be checked in the "4. Function Test" tab. Calibration can also be done through the steering wheel button combination. Watch our [wheel centre calibration video](#) on our [official Fanatec YouTube channel](#).

H-Shifter Calibration:



This button starts the shifter calibration which can also be done through a button combination on the steering wheel and is described in the shifter manual.

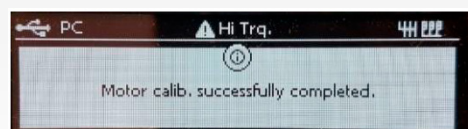


Follow the instructions step by step until the shifter is calibrated. **Tip:** For the best result, let go of the shifter lever after each gear selection before pressing "Next". Watch our [H-Shifter calibration video](#) on our [official Fanatec YouTube channel](#).

DD Motor Sensor Calibration:



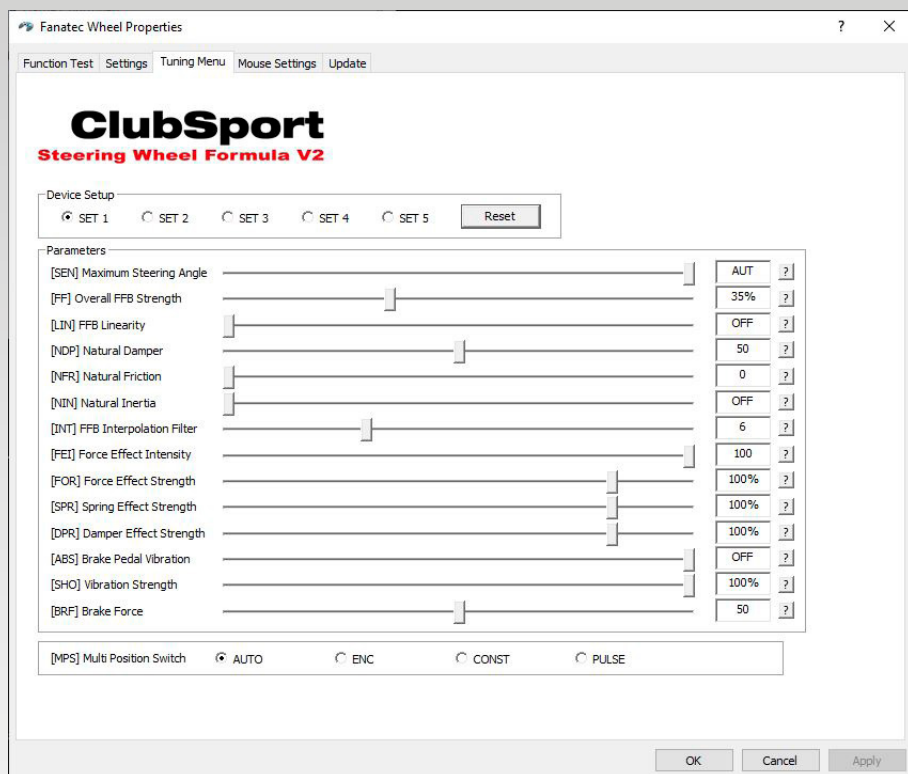
After every wheel base motor firmware update of a Podium DD, the "Motor Sensor Calibration" must be done to make sure steering feels as smooth as possible.



Remove the steering wheel before initiating a calibration. During the calibration, the wheel base shaft will rotate the steering axis slowly from side to side. A message on the DD display will confirm that the calibration is complete. Do not touch the wheel base shaft during calibration!

6

TUNING MENU



This tab contains Tuning Menu settings which are also available on your steering wheel. As on the wheel display, these settings vary with the detected hardware combination.



Click on the question mark next to a setting to get a description of what it does. Additional information can be found in product quick guides and manuals.

The sliders are automatically synced with the settings of the wheel base. If you move a slider in the driver or change the setting through the steering wheel, the other will instantly mirror the change, no need to “Apply” the settings.

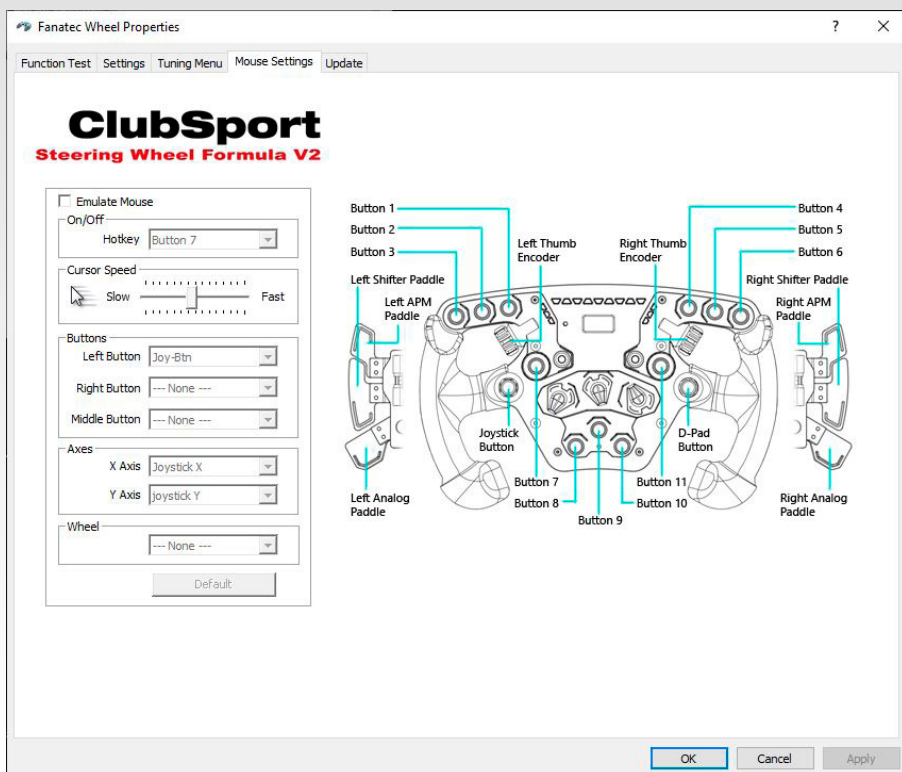
Up to 5 individual profiles of settings can be saved on the wheel base.



The “Reset” button reverts all settings back to the factory default!

Watch our **Tuning Menu Tutorial video** on our **official Fanatec YouTube channel**.

7 MOUSE SETTINGS



IMPORTANT: Only available with a steering wheel that features an analogue joystick!

NOTE: If you have a steering wheel with the Advanced Paddle Module mounted, you cannot use Mode D for the analogue paddles as they overwrite the joystick axes and conflict with the mouse functionality. Either use Mode A, B, C or disable mouse emulation. Modes are described in “4. Function Test” under “Mode Switch”.

The screenshot shows a software window with several sections for configuring mouse emulation:

- Emulate Mouse:** A checkbox that is currently unchecked.
- On/Off:** A section containing a "Hotkey" dropdown menu set to "Button 7".
- Cursor Speed:** A slider control with a mouse cursor icon on the left, labeled "Slow", and "Fast" on the right. The slider is positioned approximately in the middle.
- Buttons:** A section with three dropdown menus: "Left Button" set to "Joy-Btn", "Right Button" set to "--- None ---", and "Middle Button" set to "--- None ---".
- Axes:** A section with two dropdown menus: "X Axis" set to "Joystick X" and "Y Axis" set to "joystick Y".
- Wheel:** A dropdown menu set to "--- None ---".
- Default:** A button at the bottom of the window.

Check the upper box to enable mouse emulation.

You can select a hot key button to enable / disable emulation.

“Cursor Speed” adjusts how fast the mouse will be moved.

In this field, you can select the buttons which result in inputs of the left, middle and right mouse buttons. The picture of the steering wheel shows the corresponding button numbers.

By default, the mouse follows left / right and up / down of the joystick, but this can be changed here if needed.

Rotation of the FunkySwitch™ can be used as the mouse wheel.

The Default button will reset everything.

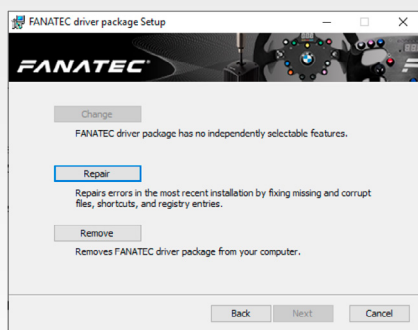
8 TROUBLESHOOTING




8.1. Device not visible or driver user interface doesn't open

NOTE: Usually not all the steps below have to be done to solve the issue. The suggestions are listed in order from starting with the easiest and quickest way. If one did not work to solve the issue, proceed with the next one. If nothing of the below helped, please contact our Support team through the website.

Possible solutions:

- Is the wheel base in PC mode? Switch modes by using the mode button (if the wheel base has one) or button combination on the steering wheel. Refer to the quick guide or manual of the wheel base and steering wheel if you do not know how to change modes.
- Unplug, then re-plug the USB cable or use a different USB port. Check if it's working with the main USB ports of the mainboard as some add-on USB ports, extensions or hubs might create problems.
- Use the repair function of the driver installer.
 1. Make sure the device is connected to the PC, switched ON and in PC mode (wheel base).
 2. Start the same installer used to install the driver.
 3. Click "Next".
 4. Click "Repair".
 5. Click "Repair" again.
 6. Accept the Administrator message with "Yes" if needed.
 7. Click "Finish".
 8. A pop-up message will prompt to restart your PC, click "Yes".




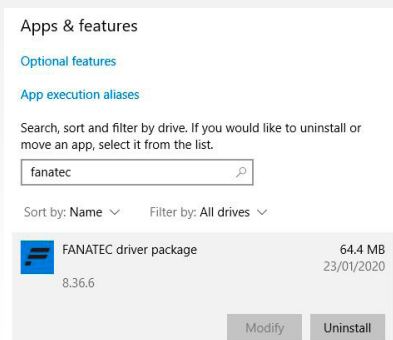
- Manually update the USB device driver using the device manager of Windows.
 1. Press the Windows key  on your keyboard, type in “Device Manager”, then press Enter.
 2. Look for an “ Unknown Device” with a yellow exclamation mark (usually at the top). By unplugging and re-plugging the USB cable, you can make sure it's the device you want to fix.
 3. Right click on “ Unknown Device” and choose “Update driver”.
 4. Choose “Browse my computer for driver software”.
 5. Browse the folder: C:\Program Files\Fanatec\Fanatec Wheel.
 6. Click on “Next”.
 7. Restart your computer.
 8. Check again in the device manager if there is another Fanatec device with a yellow exclamation mark, if yes repeat the process.
- If nothing of the above worked, revert to a previous driver / firmware which worked before, the necessary steps are explained in 8.2. below.

8.2. Reverting to older driver / firmware

If you are experiencing a new issue, you can revert to a previous driver / firmware which did not have the issue. If multiple driver and firmware versions do not help to solve the issue, contact our Support team. The issue may be hardware related and will need to be solved by our repair team.

Uninstalling the current driver:

1. Press the Windows key  on your keyboard, type in “Apps & features” and press Enter.
2. Type “Fanatec” into the search bar.
3. Look for “FANATEC driver package”.
4. Click on “Uninstall” and follow the process to uninstall the driver successfully.



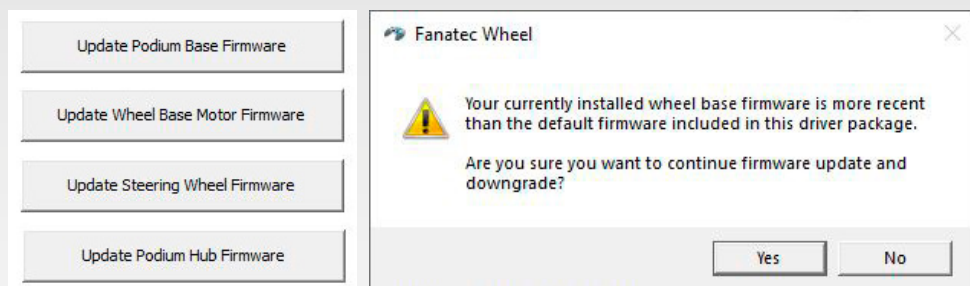
Install a previous driver:

If you do not have an earlier version which worked for you before, older drivers can be found on the product page or on the Fanatec forum under “Fanatec Software” and “Beta Drivers” (there are also non beta drivers listed).

Install the driver as usual which is described in “1. Driver Installation” of this manual.

Downgrade the firmware versions:

1. Open the driver user interface as described in 2.1. of this manual.
2. Go to the “Update” tab of the driver.
3. Click on the Update button of the firmware you want to downgrade.
4. Accept the pop-up message with “Yes”.
5. Follow the instructions of “3. Firmware Update”.
6. Repeat this for the other firmware versions as well.



THANK YOU!